

Battery cabinet voltage continues to drop





Overview

What causes a battery to drop while charging?

Loose or corroded connections can interrupt the battery's ability to deliver steady voltage. Finally, charging conditions affect battery voltage. A battery can display higher voltage while charging and may drop during discharge. Understanding these causes is essential for effective battery diagnostics.

What happens if a battery voltage drops?

A voltage drop can indicate that a battery is drained or faulty, while an increase may suggest overcharging or a malfunction in the charging system. Second, the performance and lifespan of electronic components depend on stable power supply. Voltage fluctuations can result in overheating, damage to components, or complete shutdowns.

Does a battery drop under load?

Dropping under load, however, is exactly how it works. when you apply a load to a battery, the voltage will drop. This behavior is significantly less when using an LFP battery, but still present - it's simply how a battery behaves.

Why does battery voltage drop under load?

Aging or damaged batteries have higher internal resistance, resulting in a more pronounced voltage drop under load. A 2022 study by E. J. McCoy highlighted that newer batteries showed less voltage drop under identical load conditions compared to older counterparts. Temperature effects: Battery temperature also plays a critical role.



Battery cabinet voltage continues to drop



[Why Does Battery Voltage Drop-Reasons and Solutions](#)

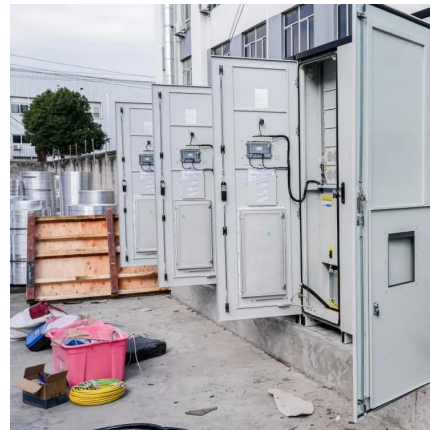
A voltage drop occurs when there is a voltage loss from the utility power supply. Battery voltage can drop for so many reasons. For instance, if you accidentally left your car's ...

[Learn More](#)

[Battery cabinet voltage continues to drop](#)

Why does battery voltage drop under load? One of the main reasons that battery voltage dropping under load is because the current passing through the battery causes resistance. This ...

[Learn More](#)



Battery Voltage Drop

Did you know a 10% voltage drop can slash your battery's lifespan by half? Whether it's your car refusing to start or your smartphone dying at 30%, voltage drop is a silent killer of ...

[Learn More](#)

[Why Does My Battery Voltage Go Up And Down? Causes, ...](#)

Loose or corroded connections can interrupt the battery's ability to deliver steady voltage. Finally, charging conditions affect battery voltage. A battery can display higher voltage ...



[Learn More](#)



[Battery Voltage Drop: Common Causes and ...](#)

A voltage drop, often caused by aging batteries, parasitic drains, or environmental factors, can affect battery-operated systems, but implementing an Electric Power Management (EPM) system that monitors and adjusts ...

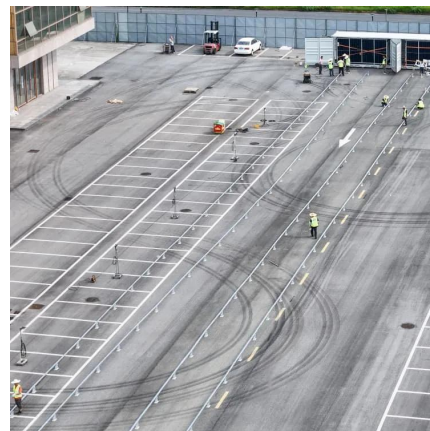
[Learn More](#)



[Battery voltage high & drops low under load!!](#)

So, in summary: Battery voltage dropping under load is normal and expected. Your high battery resting voltage is probably not normal, so please check with your battery ...

[Learn More](#)



[Battery Voltage Drop: Common Causes and Effective Solutions](#)

A voltage drop, often caused by aging batteries, parasitic drains, or environmental factors, can affect battery-operated systems, but implementing an Electric Power Management (EPM) ...

[Learn More](#)





Why Does My Battery Voltage Go Up And ...

Loose or corroded connections can interrupt the battery's ability to deliver steady voltage. Finally, charging conditions affect battery voltage. A battery can display higher voltage while charging and may drop during ...

[Learn More](#)



Why Does Battery Voltage Drop-Reasons and ...

A voltage drop occurs when there is a voltage loss from the utility power supply. Battery voltage can drop for so many reasons. For instance, if you accidentally left your car's lights on, its battery will run ...

[Learn More](#)

Battery Voltage Drop

Did you know a 10% voltage drop can slash your battery's lifespan by half? Whether it's your car refusing to start or your smartphone dying at 30%, voltage drop is a silent killer of performance. You might ...

[Learn More](#)



Voltage Depression and Reduced Performance - Leading Battery ...

Voltage depression typically occurs due to prolonged overcharging, incorrect charging methods, or the buildup of crystalline structures on the battery plates. This issue ...

[Learn More](#)



Battery voltage high & drops low under load!

So, in summary: Battery voltage dropping under load is normal and expected. Your high battery resting voltage is probably not normal, so please check with your battery manufacturer regarding the ...

[Learn More](#)



Why LiFePO4 Battery Voltage Drops Back: Common Causes ...

Learn why LiFePO4 battery voltage drops after charging. Explore common causes like aging, charger issues, storage conditions, and high load current, with practical solutions.

[Learn More](#)

Is it normal for standalone battery voltage reading to go ...

This might take 12-24 hours or more depending on the current capability of the charger and the size of the battery. After fully charging, the battery voltage will drop (it will lose ...

[Learn More](#)



Contact Us

For catalog requests, pricing, or partnerships, please visit:
<https://fundacjawandea-imk.pl>



Scan QR Code for More Information



<https://fundacjawandea-imk.pl>