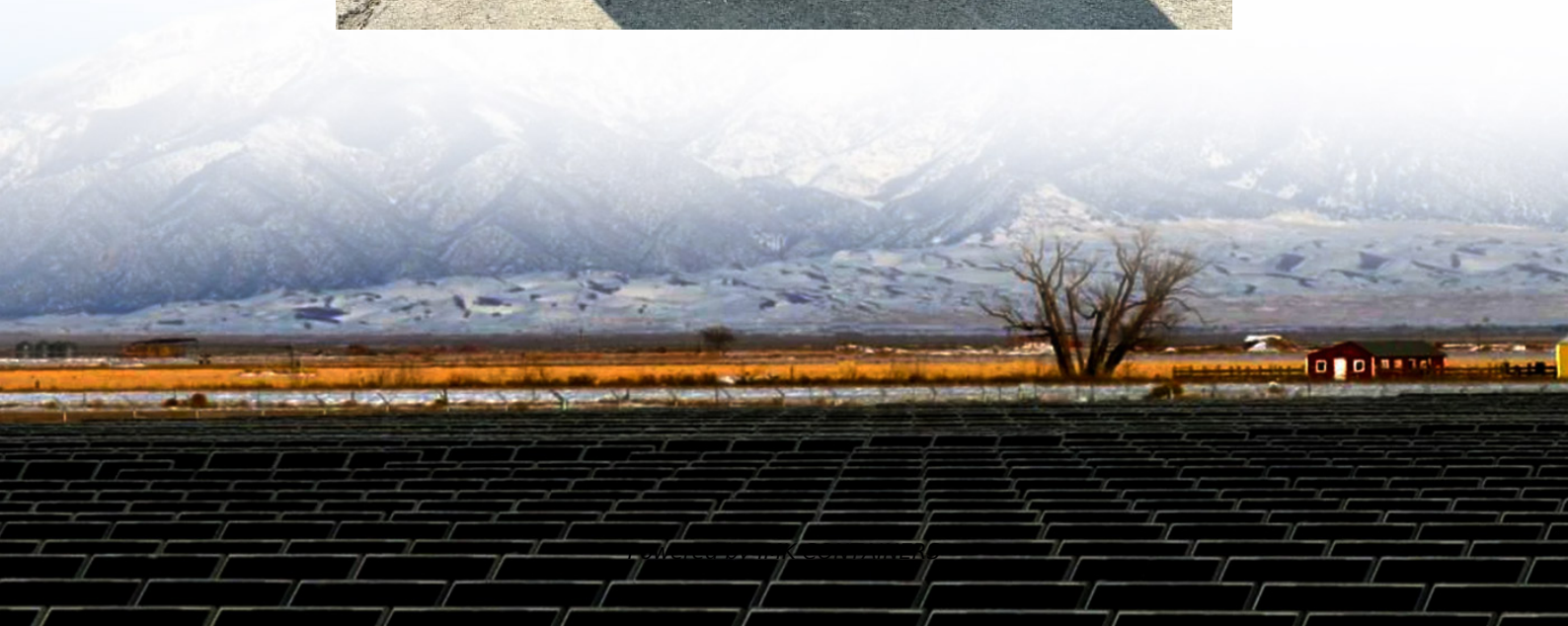


Battery cabinet battery soh





Overview

What is the difference between SOC and SoH in a battery?

SOC (State of Charge) shows the percentage of energy remaining in a battery. SOH (State of Health) compares current capacity to the original, revealing battery aging status. Cycle life is the total number of full charge–discharge cycles a battery can complete before dropping below 80% capacity.

What is a good SoH for a battery?

In commercial and industrial (C&I) and utility-scale battery energy storage systems (BESS), monitoring SOH across battery modules supports targeted maintenance like rebalancing or partial replacements. What is a good SOH?

Around 90%+ is ideal for newer systems; >80% is acceptable mid-life.

What is a SoH battery?

It represents a comparison between the battery's present capacity and its initial capacity at purchase. The SOH offers useful details regarding the battery's life expectancy and potential replacement dates. Low SOH batteries are less able to store electronic charges at a given voltage, which reduces their availability.

What role do SOC and SoH play in battery management systems?

In this article, we examine the role that SOC and SOH play in battery management systems and how they effectively operate batteries. The State of Charge calculates the battery's current capacity as a proportion of its maximum capacity. It can be compared to your car's fuel gauge in simpler words.



Battery cabinet battery soh



[Maximizing Lithium Battery SOH: Proven Methods to Boost ...](#)

This article provides an in-depth exploration of the concept of lithium battery SOH, its calculation methods, influencing factors, evaluation approaches, and practical optimization ...

[Learn More](#)

[Understanding SOH in Battery - Key ...](#)

The SOH in Battery reflects the overall health condition of a cell or pack. By monitoring it, manufacturers and users can detect early signs of aging, performance loss, or hazards such as overheating and failure. In ...

[Learn More](#)



[The Health State of a Battery \(SOH\)](#)

Battery Frontline Follow Battery Frontline for Fun and Interesting Knowledge The health state of a battery (State of Health, SOH) is a key indicator for assessing battery ...

[Learn More](#)

[Maximizing Lithium Battery SOH: Proven ...](#)

This article provides an in-depth exploration of the concept of lithium battery SOH, its calculation methods, influencing factors, evaluation approaches, and practical



optimization strategies to extend battery life.

[Learn More](#)



[Understanding SOH in Battery - Key Definition and ...](#)

The SOH in Battery reflects the overall health condition of a cell or pack. By monitoring it, manufacturers and users can detect early signs of aging, performance loss, or ...

[Learn More](#)



[What Are SOC, SOH, and Cycle Life? A ...](#)

Figure 3: Evolution of the SoH of a battery during aging In commercial and industrial (C& I) and utility-scale battery energy storage systems (BESS), monitoring SOH across battery modules supports ...

[Learn More](#)



[Analysis Of State Of Charge \(Soc\) And State Of Health ...](#)

In addition to state of charge, the state of health (SoH) is another critical metric for battery management. SoH estimates the remaining useful life of the battery pack, enabling ...

[Learn More](#)





[State-of-health estimation of lithium-ion](#)

...

Abstract Lithium-ion battery state-of-health (SOH) monitoring is essential for maintaining the safety and reliability of electric vehicles and efficiency of energy storage systems. When the SOH of lithium-ion ...

[Learn More](#)



Battery Health Management (BMS) for Telecom Cabinet Backup Batteries

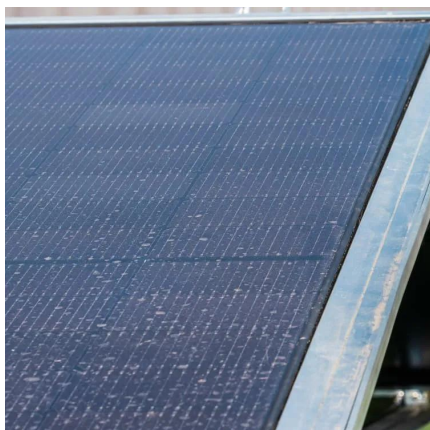
Accurate SOC/SOH estimation with BMS boosts telecom cabinet battery reliability, lifespan, and network uptime using Coulomb Counting and OCV methods.

[Learn More](#)

Research on battery SOH estimation algorithm of energy storage

The mathematical model of battery life and battery usage times is established by curve fitting, and the SOH of battery is predicted according to this model. Finally, the SOH of Li ...

[Learn More](#)



[State-of-health estimation of lithium-ion batteries: A ...](#)

Abstract Lithium-ion battery state-of-health (SOH) monitoring is essential for maintaining the safety and reliability of electric vehicles and efficiency of energy storage ...

[Learn More](#)



[What really matters in Battery State of Health \(SoH\) Testing?](#)

We interviewed Dr. Gael Chouchelamane, a former JLR battery engineer, to share insights about what really matters in battery state of health (SoH) testing. Battery SoH testing ...

[Learn More](#)



[The Importance of State of Charge \(SOC\) and State of ...](#)

The Battery Management System (BMS), which monitors and controls these parameters, provides crucial knowledge about the capacity and state of the battery. In this ...

[Learn More](#)

[The Health State of a Battery \(SOH\)](#)

Battery Frontline Follow Battery Frontline for Fun and Interesting Knowledge The health state of a battery (State of Health, SOH) is a key indicator for assessing battery performance and lifespan. The ...

[Learn More](#)



What Are SOC, SOH, and Cycle Life? A Complete Guide to Battery

Figure 3: Evolution of the SoH of a battery during aging In commercial and industrial (C& I) and utility-scale battery energy storage systems (BESS), monitoring SOH ...

[Learn More](#)



Contact Us

For catalog requests, pricing, or partnerships, please visit:
<https://fundacjawandea-imk.pl>

Scan QR Code for More Information



<https://fundacjawandea-imk.pl>