

Base station communication security issues





Overview

Are false base station attacks a threat to 5G networks?

Abstract: The rapid advancement of 5G networks introduces new security challenges, particularly with the rise of false base station (FBS) attacks. This study investigates the vulnerabilities of 5G networks exploited by FBSs, which hijack communications by mimicking legitimate base stations and compromising user equipment (UE).

Why is network security important in wireless communication base station monitoring?

With the rapid popularization of the network, under the increasingly complex network security situation and the increasingly prominent network security problems, network security occupies an important field in the wireless communication base station monitoring system, and has become a hot research direction.

What happens if a base station is faulty?

The faulty base station establishes a radio connection with the user equipment and releases the connection afterward due to the worst channel conditions. Because our reference values come from the worst channel conditions, the optimal thresholds hence ensure fake base station detection with zero false positives under varying network conditions.

What is a base station monitoring system based on?

Research on Wireless Communication Base Station Monitoring System Based on Artificial Intelligence and Network Security 2.1 Research on Key Technologies of Wireless Communication The communication of network is the fundamental of wireless communication .



Base station communication security issues



[Fake Base Station Detection and Blacklisting](#)

A fake base station is a well-known security issue in mobile networking. The fake base station exploits the vulnerability in the broadcasting message announcing the base ...

[Learn More](#)

[Fake Base Station Detection and Link Routing Defense](#)

A malicious or fake base station is a well-known security issue in mobile networking. For example, there are open-source tools and tutorials for setting up fake base ...

[Learn More](#)



Base Station Certificate and Multi-Factor Authentication for ...

The malicious or rogue base station has been a well-known security issue in the wireless security community, as described in Section II-D. The malicious base station threats ...

[Learn More](#)



Design of Wireless Communication Base Station Monitoring ...

With the rapid popularization of the network, under the increasingly complex network security situation and the increasingly prominent network security problems, network security ...



[Learn More](#)



Exposing and Addressing Fake Base Station Vulnerabilities in ...

The rapid advancement of 5G networks introduces new security challenges, particularly with the rise of false base station (FBS) attacks. This study investigates the ...

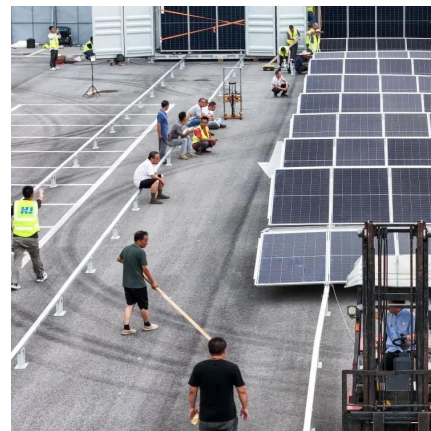
[Learn More](#)



Communication Base Station Security Features, HuiJue ...

With over 7 million communication base stations globally powering our connected world, a critical question emerges: How secure are these critical nodes in our digital infrastructure? Recent ...

[Learn More](#)



Security Advisory

Security Advisory - Base station communication security issues of DEEBOT series products Initial Release Date: May 8, 2025 Update Date: July 1, 2025 Vulnerability Overview ...

[Learn More](#)





[Fake Base Station Detection and Link Routing Defense](#)

A malicious or fake base station is a well-known security issue in mobile networking. For example, there are open-source tools and tutorials for setting up fake base ...

[Learn More](#)



[Securing 5G Non-Public Networks Against Fake Base ...](#)

ABSTRACT Various industries have adopted 5G Non-Public Networks to take advantage of improved connectivity while remaining separate from public networks. As these ...

[Learn More](#)

[Risk Communication Guide for Mobile Phones and Base ...](#)

Communication about the location of base station antennas or use of mobile phones is sometimes characterised by high levels of concern about the subject and very little ...

[Learn More](#)



[Base Station Security: Best Practices for Operators](#)

The evolving landscape of telecommunications security presents unique challenges for operators managing base station networks. From remote locations to urban ...

[Learn More](#)



Contact Us

For catalog requests, pricing, or partnerships, please visit:
<https://fundacjawandea-imk.pl>

Scan QR Code for More Information



<https://fundacjawandea-imk.pl>