

Base station communication link analysis





Overview

In the design of wireless communications links between two sites, issues of range, throughput, and received signal quality are of critical importance to the system engineer. Link budget analysis accounts.

How to analyze a wireless communication link?

Introduction In this chapter, we provide the foundation for analyzing a wireless communication link. The purpose is to evaluate the signal-to-noise ratio at the receiver to assess the link performance. Evaluation of the signal power and noise power requires the path loss and receiver system noise temperature, respectively.

How does a satellite communication link analysis work?

The analysis is to be handled by the simulation part of the interface, which has a 'compiler' and 'run' part. The compiler looks for any errors in the given input parameters or misused input parameters, so that it is possible to take some measures. After compiling, the interface can run the overall satellite communication link analysis.

What are the characteristics of link analysis?

Done properly, link analysis can predict if the operation thresholds of the communication link are met with satisfactory quality, based on the specifications of the ground components and space components. Modulation scheme being used. Desired communication quality. Coding gain. Additional overheads. Channel Bandwidth. Thermal Noise power.

How to strengthen the transmitted signal in a satellite communication system?

In satellite communication systems to strengthen the transmitted signal, an amplifier is necessary, and to change the low power received signal wave due to propagation effects LNA is used. All the antennas have internal links to their respective transmitter and receiver.



Base station communication link analysis



Link Budget Analysis

In the design of wireless communications links between two sites, issues of range, throughput, and received signal quality are of critical importance to the system engineer. Link budget ...

[Learn More](#)

[Wireless Communication Base Station Location Selection ...](#)

1. Introduction Recently, with the rapid development of wireless communication technology, the enhancement of wireless network performance is concerned with meeting the ...

[Learn More](#)



[Communication Base Station Site Selection Method Based ...](#)

With the large-scale deployment of 5G technology, the rationality of communication base station siting is crucial for network performance, construction costs, and operational ...

[Learn More](#)



[Link Budget Analysis: Getting Started](#)

The design of any communication link is based on: Earth Station A Meeting of minimum C/N ratio for a specific percentage of time. Carrying the maximum revenue earning ...

[Learn More](#)



[A Development of Satellite Communication ...](#)

In a Satellite communication system, a link budget analysis is the detailed investigation of signal gains and losses moving through a channel from a sender to receiver. It inspects the fading of passed on ...

[Learn More](#)



Designing Efficient Satellite Links: A Review of the Link Budget Analysis

In an RF communication system, the path a signal takes between the transmitter to the receiver is called a communication link. When designing such systems, evaluating the ...

[Learn More](#)



[A Development of Satellite Communication Link Analysis Tool](#)

In a Satellite communication system, a link budget analysis is the detailed investigation of signal gains and losses moving through a channel from a sender to receiver. It ...

[Learn More](#)





[Communication Base Station Site Planning Based on ...](#)

With the sharp development of mobile communication technology, the coverage area of existing base stations cannot meet the increasing demand of users, so it is significant ...

[Learn More](#)



[Mobile Communication Network Base Station Deployment ...](#)

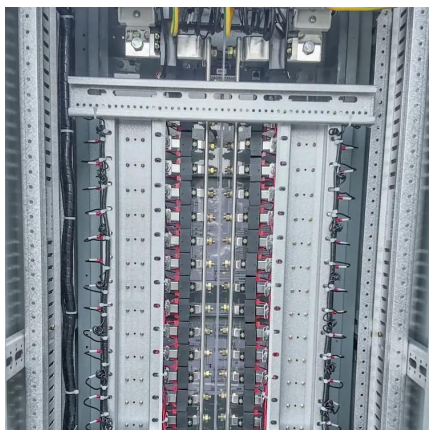
This paper discusses the site optimization technology of mobile communication network, especially in the aspects of enhancing coverage and optimizing base station layout. ...

[Learn More](#)

[Communication link analysis \(Chapter 5\)](#)

Basic wireless communication link In wireless communications, the point-to-point link is the simplest connection between a transmitter and a receiver. In this basic link, the transmitted signal travels the line-of-sight ...

[Learn More](#)



[System Simulation for RF Link Budget Analysis](#)

Overview Cadence® AWR® Visual System Simulator™ (VSS) communications and radar systems design software provides an RF link budget analysis capability that enables ...

[Learn More](#)



[Communication link analysis \(Chapter 5\)](#)

Basic wireless communication link In wireless communications, the point-to-point link is the simplest connection between a transmitter and a receiver. In this basic link, the ...

[Learn More](#)



Contact Us

For catalog requests, pricing, or partnerships, please visit:
<https://fundacjawandea-imk.pl>

Scan QR Code for More Information



<https://fundacjawandea-imk.pl>