

# Base station communication equipment was damaged by heavy rain





## Overview

---

How does a communication tower damage a base station?

The communication tower and its antenna equipment are responsible for signal transmission and reception, and their damage directly affects the normal operation of the base station. This study mainly considers tower body damage (X 11) and antenna damage (X 12).

What causes a base station to fail?

Power interruption is a major factor causing base station functional failure, including main power outage (M 1) and depletion of the backup battery (M 2). The communication tower and its antenna equipment are responsible for signal transmission and reception, and their damage directly affects the normal operation of the base station.

What type of damage does a communication base station suffer?

Based on field investigations after the Yangbi earthquake , this paper categorizes typical seismic damage of communication base stations as follows: Communication infrastructure damage is particularly severe, with building collapse leading to equipment destruction.

What is an indoor base station?

An indoor base station comprises a communication room accommodating various communication equipment and a communication tower responsible for transmitting and receiving information. The communication room is equipped with wireless communication devices, transmission equipment, power supply equipment, air conditioning, and cable routing racks.



## Base station communication equipment was damaged by heavy rain

---



### [The Impact of Weather Conditions on Radio Communication](#)

Ensuring that antennas and communication equipment are securely mounted and protected from wind damage is crucial for maintaining reliable radio communication. Wind can ...

[Learn More](#)

### [Weather Impact on Wireless Communication ...](#)

Fixed wireless communication hardware relies on the use of antennas, towers, and line of sight (LoS) for transmission. These antennas are strategically positioned to establish a clear path for signal ...

[Learn More](#)



### [Radio and Other Telecommunication Failures \(TL0212\)](#)

The main reasons for the communication failure were the destruction of technology infrastructure, accumulated debris, and extensive flooding that affected the power systems and ...

[Learn More](#)



### [The Impact of Weather Conditions on Radio Communication](#)

Ensuring that antennas and communication equipment are securely mounted and protected from wind damage is crucial for maintaining reliable radio ...





[Learn More](#)



### [Radio and Other Telecommunication Failures ...](#)

The main reasons for the communication failure were the destruction of technology infrastructure, accumulated debris, and extensive flooding that affected the power systems and cabins that contained the ...

[Learn More](#)



### [Communication Base Station Disaster Recovery. HuiJue ...](#)

When Nature Strikes: Can Our Networks Survive?  
As typhoons batter coastal cities and wildfires engulf telecom infrastructure, one urgent question emerges: How can communication base ...

[Learn More](#)



### [Weather Impact on Wireless Communication Hardware](#)

Fixed wireless communication hardware relies on the use of antennas, towers, and line of sight (LoS) for transmission. These antennas are strategically positioned to establish a ...

[Learn More](#)



## Post-earthquake functional state assessment of communication base

The reliability and resilience of communication base stations are critical to the post-earthquake performance of the communication system, and consequ...

[Learn More](#)



## Five Key Enablers for Communication during and after...

Abstract--Civilian communication during disasters such as earthquakes, floods, and military conflicts is crucial for saving lives. Nevertheless, several challenges exist during ...

[Learn More](#)



## Reliability prediction and evaluation of communication...

Earthquake disasters can cause collapse of houses, damage to communication base stations towers and transmission lines, resulting in the disruption of communication ...

[Learn More](#)



## The Impact of Weather on Communication Systems

Weather conditions play a significant role in the performance and reliability of communication systems. Learn how SMC Group mitigates this by designing and ...

[Learn More](#)





### [Damage assessment of mobile communication facilities ...](#)

ABSTRACT Communication systems play a critical role in emergency response during disasters. In this study, we proposed a methodology for assessing damage to mobile ...

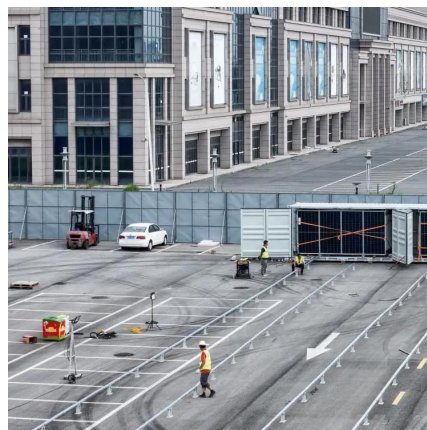
[Learn More](#)



### **Reliability prediction and evaluation of communication base stations ...**

In the post-earthquake survey, it was found that the communication base stations could maintain basic operation if the main equipment such as power supply system, wireless ...

[Learn More](#)



### [The Impact of Weather on Communication ...](#)

Weather conditions play a significant role in the performance and reliability of communication systems. Learn how SMC Group mitigates this by designing and manufacturing communication equipment that ...

[Learn More](#)



## **Contact Us**

---

For catalog requests, pricing, or partnerships, please visit:  
<https://fundacjawandea-imk.pl>



## Scan QR Code for More Information



<https://fundacja-wandea-imk.pl>