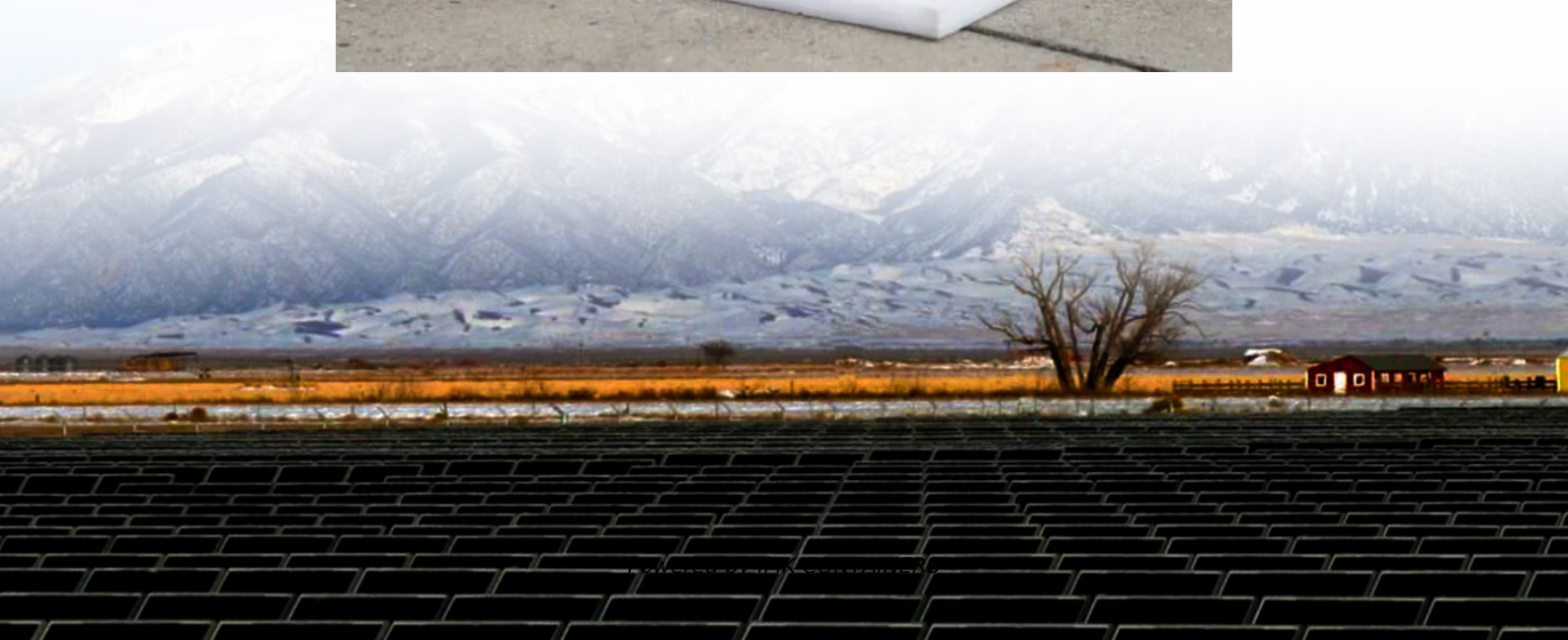


Base station battery replacement quota





Overview

How does a battery group work in a base station?

The equipment in base stations is usually supported by the utility grid, where the battery group is installed as the backup power. In case that the utility grid interrupts, the battery discharges to support the communication switching equipment during the period of the power outage.

Which battery is best for telecom base station backup power?

Among various battery technologies, Lithium Iron Phosphate (LiFePO₄) batteries stand out as the ideal choice for telecom base station backup power due to their high safety, long lifespan, and excellent thermal stability.

How long do base station batteries last?

After using BatAlloc to allocate suitable numbers of battery groups for base stations, the average battery lifetime has achieved to 4.3 years, roughly 1.8 times longer than that of the original allocation. The results indicate that our framework can also better protect base station batteries and significantly prolong their average lifetimes.

How many battery groups does a base station have?

The original battery allocation result is largely skewed that over 65 percent base stations are equipped with only one battery group. Our framework considers both the base station situations and battery features, allocating 2 battery groups to most base stations and 3 or 4 battery groups to those with long-time power outages.



Base station battery replacement quota



[Telecom Battery Backup System , Sunwoda ...](#)

A telecom battery backup system is a comprehensive portfolio of energy storage batteries used as backup power for base stations to ensure a reliable and stable power supply.

[Learn More](#)

[How much energy storage battery is used in base stations?](#)

Therefore, while evaluating battery costs, it is invaluable to consider the full lifecycle expenses and overall effectiveness of the chosen technology to make a prudent ...

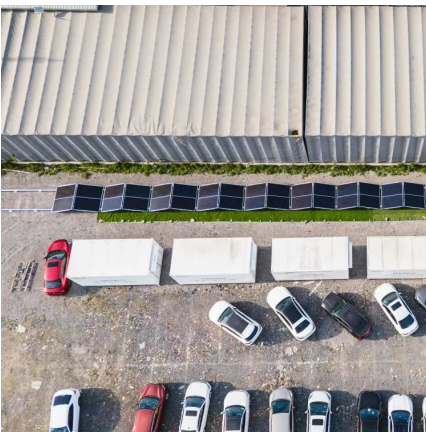
[Learn More](#)



[Battery for Telecom Base Station Market](#)

Key Drivers Shaping Battery Demand in Telecom Base Station Market The expansion of 5G networks globally remains the most significant demand driver for telecom base station ...

[Learn More](#)

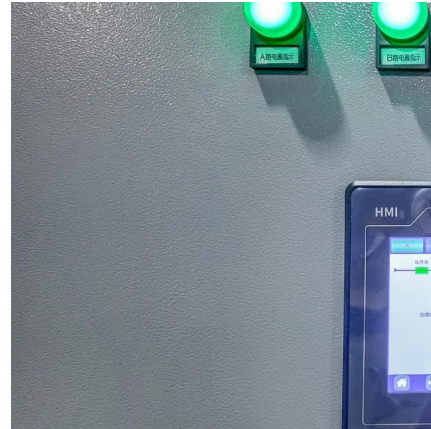


How to Determine the Right Battery Capacity for Telecom Base Stations

Example: If a base station consumes 500W and needs 4 hours of backup at 48V, the required capacity is: $500W \times 4h / 48V = 41.67Ah$ Choosing a battery with a slightly higher ...



[Learn More](#)



[Telecom Battery Backup System , Sunwoda Energy](#)

A telecom battery backup system is a comprehensive portfolio of energy storage batteries used as backup power for base stations to ensure a reliable and stable power supply.

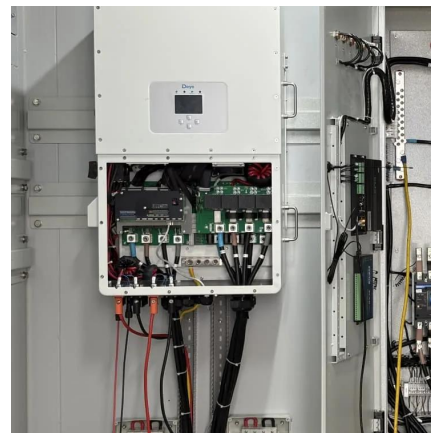
[Learn More](#)



[Base Station Lithium Replacement , Huijue Group E-Site](#)

When was the last time your base station battery system caused unexpected downtime? With 5G deployments accelerating globally, telecom operators now face a critical juncture: 43% of ...

[Learn More](#)



[Telecom Base Station Backup Power Solution: Design Guide ...](#)

Discover the 48V 100Ah LiFePO4 battery pack for telecom base stations: safe, long-lasting, and eco-friendly. Optimize reliability with our design guide.

[Learn More](#)

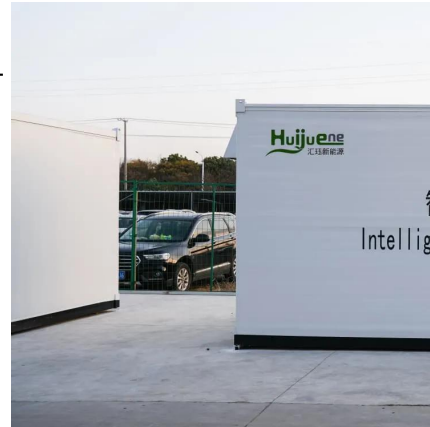


[Telecom Base Station Backup Power Solution: ...](#)



Discover the 48V 100Ah LiFePO4 battery pack for telecom base stations: safe, long-lasting, and eco-friendly. Optimize reliability with our design guide.

[Learn More](#)



[BASE STATION BATTERY REPLACEMENT QUOTA](#)

Battery cabinet new energy base station power generation Base station energy cabinet: a highly integrated and intelligent hybrid power system that combines multi-input power modules ...

[Learn More](#)



[Telecom Base Station Battery Replacement Process](#)

Telecom base stations--integral nodes in wireless networks--rely heavily on uninterrupted power to maintain connectivity. To ensure continuous operation during power outages or grid ...

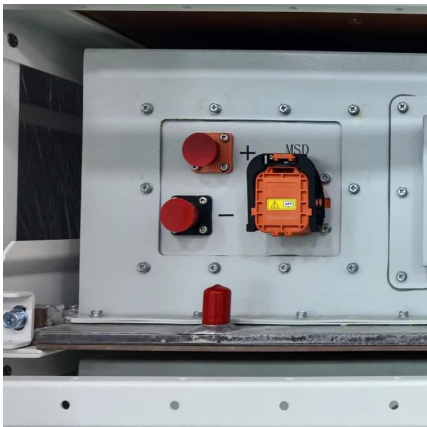
[Learn More](#)



[5G Base Station Lithium Battery: Capacity and Discharge ...](#)

EverExceed's high-rate discharge LiFePO4 batteries are engineered to handle these demanding conditions, ensuring stable and efficient power delivery to 5G infrastructure. ...

[Learn More](#)



[Backup Battery Analysis and Allocation against Power ...](#)



Battery groups are installed as backup power in most of the base stations in case of power outages due to severe weathers or human-driven accidents, particularly in remote ...

[Learn More](#)



[How to Determine the Right Battery Capacity ...](#)

Example: If a base station consumes 500W and needs 4 hours of backup at 48V, the required capacity is: $500W \times 4h / 48V = 41.67Ah$ Choosing a battery with a slightly higher capacity ensures reliability under ...

[Learn More](#)

Contact Us

For catalog requests, pricing, or partnerships, please visit:
<https://fundacjawandea-imk.pl>

Scan QR Code for More Information



<https://fundacjawandea-imk.pl>