

BMS management of batteries





Overview

What is battery management system (BMS)?

Battery Management System (BMS) is the “intelligent manager” of modern battery packs, widely used in fields such as electric vehicles, energy storage stations, and consumer electronics.

What are the components of a battery management system (BMS)?

A typical battery management system (BMS) consists of the following main components: Battery Management Controller (BMC), Voltage and Current Sensors, Temperature Sensors, Balancing Circuit, and Power Supply Unit.

What makes a good battery management system?

They need to handle new challenges while controlling complex battery systems more precisely. A good battery management system (BMS) needs hardware components that work together to monitor, protect, and optimize battery performance. These components act as the system’s eyes and ears.

What is a multi-master battery management unit (BMS)?

NX-Tech’s BMS offers a parallel pack control which provides an advantage for scalable, modular battery architectures suitable for: A multi-master BMS allows multiple Battery Management Units (BMUs) to coordinate as peers within a battery system.



BMS management of batteries



[What is a Battery Management System \(BMS\)? Essential ...](#)

A Battery Management System (BMS) safeguards lithium-ion batteries by monitoring voltage, current, and temperature, preventing overcharge, discharge, and thermal ...

[Learn More](#)

[What Is a BMS in Batteries? Definition, ...](#)

A Battery Management System (BMS) is the intelligent controller that ensures batteries are used safely, efficiently, and reliably. Whether you're an engineer, a tech enthusiast, or just curious about how ...

[Learn More](#)



[What Is a Battery Management System \(BMS\)?](#)

A Battery Management System (BMS) is an essential component in modern battery-powered applications, responsible for monitoring, protecting, and optimizing the ...

[Learn More](#)



[Battery Management System Guide: Functions, Circuits](#)

Comprehensive guide to Battery Management Systems (BMS), covering functions, circuits, components, and selection tips for safer, more reliable lithium-ion battery packs.

[Learn More](#)



[What is a Battery Management System?](#)

Battery management system (BMS) is technology dedicated to the oversight of a battery pack, which is an assembly of battery cells, electrically organized in a row x column ...

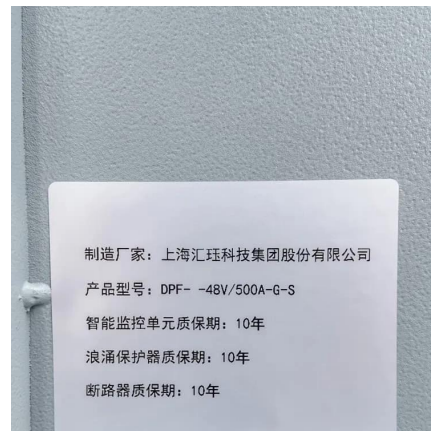
[Learn More](#)



[Battery Management Systems \(BMS\): A ...](#)

A Battery Management System (BMS) is essential for ensuring the safe and efficient operation of battery-powered systems. From real-time monitoring and cell balancing to thermal management and fault detection, ...

[Learn More](#)



[Role and Importance of BMS](#)

A battery pack's performance, use, and safety are monitored and managed by a battery management system (BMS), an intelligent electronic device. It is a crucial component of ...

[Learn More](#)



[What is a Battery Management System?](#)



Battery management system (BMS) is technology dedicated to the oversight of a battery pack, which is an assembly of battery cells, electrically organized in a row x column matrix configuration to enable ...

[Learn More](#)



[Battery Management System Guide: ...](#)

Comprehensive guide to Battery Management Systems (BMS), covering functions, circuits, components, and selection tips for safer, more reliable lithium-ion battery packs.

[Learn More](#)



What is a Battery Management System? Complete Guide to BMS ...

A Battery Management System (BMS) is an electronic control unit that monitors and manages rechargeable battery packs to ensure safe operation, optimal performance, and ...

[Learn More](#)



[Role and Importance of BMS](#)

A battery pack's performance, use, and safety are monitored and managed by a battery management system (BMS), an intelligent electronic device. It is a crucial component of contemporary battery technology, especially in ...

[Learn More](#)



[What Is a BMS in Batteries? Definition, Functions, and ...](#)



A Battery Management System (BMS) is the intelligent controller that ensures batteries are used safely, efficiently, and reliably. Whether you're an engineer, a tech ...

[Learn More](#)



[Battery Management System \(BMS\) Detailed Explanation: ...](#)

Battery Management System (BMS) is the "intelligent manager" of modern battery packs, widely used in fields such as electric vehicles, energy storage stations, and consumer ...

[Learn More](#)



[What Is a Battery Management System ...](#)

A Battery Management System (BMS) is an essential component in modern battery-powered applications, responsible for monitoring, protecting, and optimizing the performance of rechargeable ...

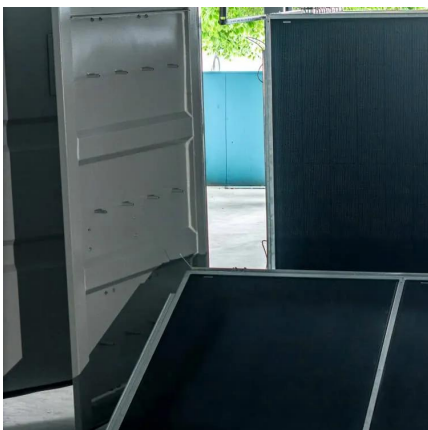
[Learn More](#)



[Battery Management System \(BMS\) Detailed ...](#)

Battery Management System (BMS) is the "intelligent manager" of modern battery packs, widely used in fields such as electric vehicles, energy storage stations, and consumer electronics. Its core task ...

[Learn More](#)



[Understanding Battery Management Systems \(BMS\): The ...](#)



Discover the details of Understanding Battery Management Systems (BMS): The "Brain" Behind Every Lithium-Ion Battery at Hunan CTS Technology Co.,Ltd, a leading supplier ...

[Learn More](#)



[Battery Management Systems \(BMS\): A Complete Guide](#)

A Battery Management System (BMS) is essential for ensuring the safe and efficient operation of battery-powered systems. From real-time monitoring and cell balancing to thermal ...

[Learn More](#)

[What is a Battery Management System?](#)

A Battery Management System (BMS) is an electronic control unit that monitors and manages rechargeable battery packs to ensure safe operation, optimal performance, and extended lifespan. This sophisticated ...

[Learn More](#)



Contact Us

For catalog requests, pricing, or partnerships, please visit:
<https://fundacjawandea-imk.pl>



Scan QR Code for More Information



<https://fundacjawandea-imk.pl>