

Are 5G base stations used for communication shared with





Overview

What is a 5G base station?

As the world continues its transition into the era of 5G, the demand for faster and more reliable wireless communication is skyrocketing. Central to this transformation are 5G base stations, the backbone of the next-generation network. These base stations are pivotal in delivering the high-speed, low-latency connectivity that 5G promises.

What is a 5G baseband unit?

The 5G baseband unit is responsible for NR baseband protocol processing, including the entire user plane (UP) and control plane (CP) protocol processing functions, and provides a backhaul interface (NG interface) with the core network and an interconnection interface (Xn interface) between base stations).

What frequency bands do 5G base stations use?

Utilization of Frequency Spectrum: 5g Base Stations Operate in specific Frequency Bands Allocated for 5G Communication. These bands include Sub-6 GHz Frequencies for Broader Coverage and Millimeter-Wave (Mmwave) Frequencies for Higher Data Rates.

How does the architecture of a base station affect 5G?

The architecture and shape of the base station directly affect how the 5G network is deployed. In the technical standards, the frequency band of 5G is much higher than that of 2G, 3G and 4G networks.



Are 5G base stations used for communication shared with



What is a 5G base station?

In Summary, The 5g Base Station is a Critical Element of the 5g Wireless Network, Serving As the Between User Devices and the Core Network. IT Incorporate Advanced ...

[Learn More](#)

What Is A 5G Base Station?

Logical Architecture 5G base stations are mainly used to provide 5G air interface protocol functions and support communication with user equipment and core networks. ...

[Learn More](#)



Base Stations

Base stations are important in the cellular communication as it facilitate seamless communication between mobile devices and the network communication. The demand for efficient data transmission are increased ...

[Learn More](#)

base station in 5g

A 5G base station is a complex system that integrates advanced RF technology, digital signal processing, and network architecture to deliver high-performance wireless communication in the 5G era.



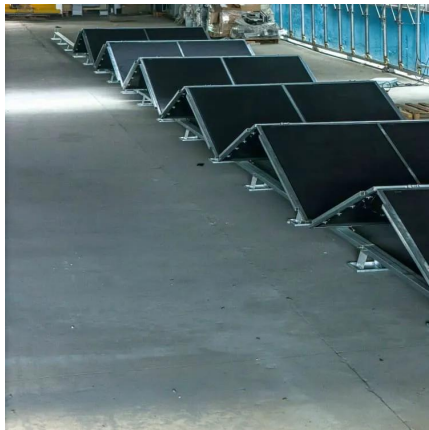
[Learn More](#)



What is a 5G base station?

In Summary, The 5g Base Station is a Critical Element of the 5g Wireless Network, Serving As the Between User Devices and the Core Network. IT Incorporate Advanced Technologies Like Massive Mimo, ...

[Learn More](#)



Types of 5G NR Base Stations: A ...

Understanding these base stations helps network operators and businesses optimize 5G deployment strategies to meet diverse connectivity needs. As 5G continues to evolve, advancements in base ...

[Learn More](#)



What is a 5G Base Station?

As the world continues its transition into the era of 5G, the demand for faster and more reliable wireless communication is skyrocketing. Central to this transformation are 5G ...

[Learn More](#)





What is 5G Base Station?

The coverage area of a 5G base station depends on several factors, including the transmit power, antenna gain, frequency band used, and the surrounding environment. In urban areas, due to ...

[Learn More](#)



How 5G Base Stations Are Powering the Future of Connectivity

The dawn of the 5G era has ushered in unprecedented advancements in connectivity, transforming industries, lifestyles, and global economies. At the heart of this ...

[Learn More](#)

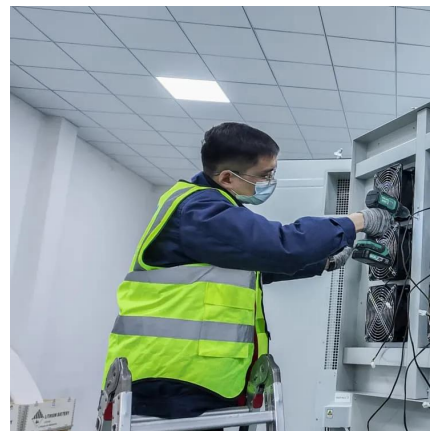


How 5G Base Stations Are Powering the

...

The dawn of the 5G era has ushered in unprecedented advancements in connectivity, transforming industries, lifestyles, and global economies. At the heart of this transformation lies the 5G base station--a ...

[Learn More](#)



Base Stations

Base stations are important in the cellular communication as it facilitate seamless communication between mobile devices and the network communication. The demand for ...

[Learn More](#)





What Is 5G Base Station?

Base stations, also called public mobile communication base stations, are interface devices for mobile devices to access the Internet. They are also a form of radio stations, which ...

[Learn More](#)



What Is A 5G Base Station?

Logical Architecture 5G base stations are mainly used to provide 5G air interface protocol functions and support communication with user equipment and core networks. According to logical functions, 5G ...

[Learn More](#)

What Is a Base Station? Exploring the Core of 5G Networks ...

Base stations are the core of mobile communication, and with the rise of 5G, thermal and energy challenges are increasing. This article explains the definition, structure, ...

[Learn More](#)



base station in 5g

A 5G base station is a complex system that integrates advanced RF technology, digital signal processing, and network architecture to deliver high-performance wireless ...

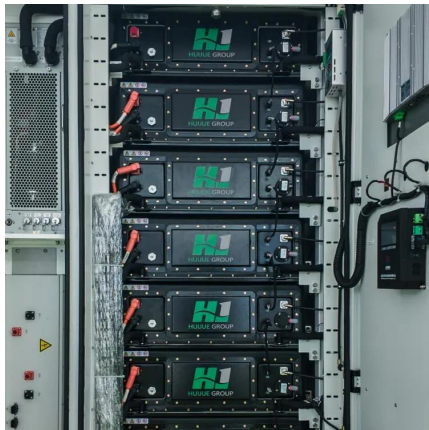
[Learn More](#)



What Is 5G Base Station?

Base stations, also called public mobile communication base stations, are interface devices for mobile devices to access the Internet. They are also a form of radio stations, which refer to radio transceiver stations ...

[Learn More](#)



Types of 5G NR Base Stations: A Comprehensive Overview

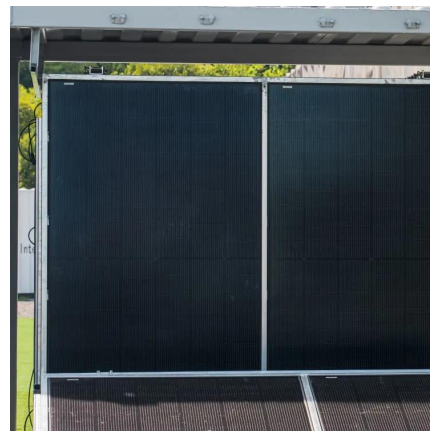
Understanding these base stations helps network operators and businesses optimize 5G deployment strategies to meet diverse connectivity needs. As 5G continues to ...

[Learn More](#)

What is 5G Base Station?

The coverage area of a 5G base station depends on several factors, including the transmit power, antenna gain, frequency band used, and the surrounding environment. In urban areas, due to the high density of users ...

[Learn More](#)



Contact Us

For catalog requests, pricing, or partnerships, please visit:
<https://fundacjawandea-imk.pl>



Scan QR Code for More Information



<https://fundacja-wandea-imk.pl>