

Amsterdam Communications 5G Base Station Project Department





Overview

What is 5G base station architecture?

5G base station architecture is characterized by its flexibility, virtualization, and the ability to support diverse services through network slicing. The separation of CU and DU, along with the introduction of cloud-based technologies, allows for more efficient resource utilization and scalability.

Why do 5G base stations use MIMO & beamforming?

Both are critical for ensuring seamless communication between different network elements. 5G base stations often use Massive Multiple Input Multiple Output (MIMO) technology and beamforming to enhance spectral efficiency and coverage. Massive MIMO involves using a large number of antennas to communicate with multiple devices simultaneously.

Do 5G spectrum bands improve traffic capacity in the Netherlands?

Based on the inputs of this analysis, we find that 5G spectrum bands provide an average per user traffic capacity improvement of approximately 40% for the Netherlands in comparison with the existing LTE capacity. 1. Introduction.

What is a 5G ran?

The RAN is responsible for connecting user devices to the core network. In 5G, the RAN is divided into two main components: gNB (gNodeB) and NG-RAN (Next-Generation RAN). gNB (gNodeB): This is the physical base station that communicates directly with user devices (UEs).



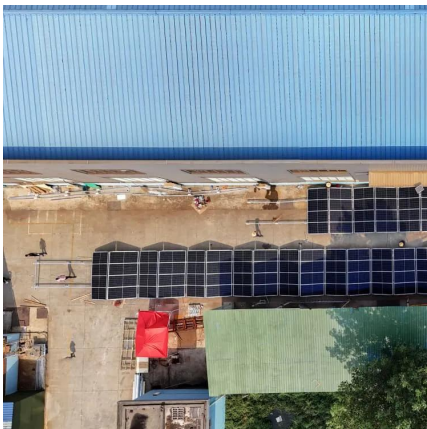
Amsterdam Communications 5G Base Station Project Department



Complete Guide to 5G Base Station Construction , Key Steps, ...

Explore how 5G base stations are built--from site planning and cabinet installation to power systems and cooling solutions. Learn the essential components, technologies, and ...

[Learn More](#)



[Assessing the capacity, coverage and cost of 5G ...](#)

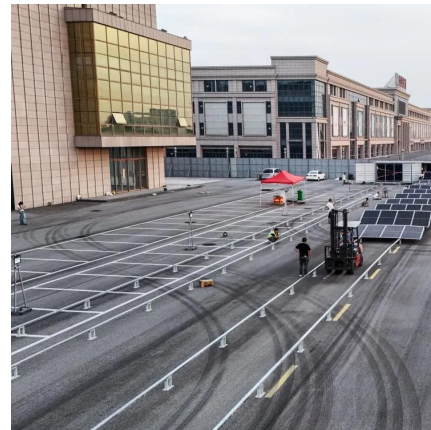
Some envisioned 5G use cases, such as traffic safety and control of critical infrastructure and industry processes, may require much lower latency compared with what is ...

[Learn More](#)

[What is a 5G base station?](#)

In Summary, The 5g Base Station is a Critical Element of the 5g Wireless Network, Serving As the Between User Devices and the Core Network. IT Incorporate Advanced Technologies Like Massive MIMO, ...

[Learn More](#)



[5G Station Construction](#)

Introduction The construction of 5G base stations represents a pivotal step in the evolution of telecommunications infrastructure, ushering in a new era of connectivity and innovation. This ...

[Learn More](#)



[Unveiling the 5G Base Station: The Backbone](#)

Explore the inner workings of 5G base stations, the critical infrastructure enabling high-speed, low-latency wireless connectivity. Discover their components, architecture, enabling technologies, ...

[Learn More](#)



[What is a 5G base station?](#)



[5g base station architecture](#)

5G (fifth generation) base station architecture is designed to provide high-speed, low-latency, and massive connectivity to a wide range of devices. The architecture is more ...

[Learn More](#)



[Unveiling the 5G Base Station: The Backbone of Next-Gen ...](#)

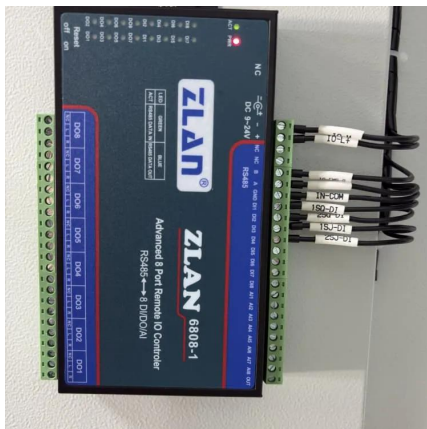
Explore the inner workings of 5G base stations, the critical infrastructure enabling high-speed, low-latency wireless connectivity. Discover their components, architecture, ...

[Learn More](#)



In Summary, The 5g Base Station is a Critical Element of the 5g Wireless Network, Serving As the Between User Devices and the Core Network. IT Incorporate Advanced ...

[Learn More](#)



5G

5G will be the new generation of mobile connectivity. The connection will be faster and more reliable, and will bring previously unknown possibilities for citizens and business. Amsterdam is exploring the ...

[Learn More](#)

[Prediction of Optimal Locations for 5G Base Stations in ...](#)

Qi Wang et al. [5] address challenges in urban 5G network deployment, emphasizing issues with millimeter wave signals. The main challenge is deploying an ultra ...

[Learn More](#)



[Complete Guide to 5G Base Station ...](#)

Explore how 5G base stations are built--from site planning and cabinet installation to power systems and cooling solutions. Learn the essential components, technologies, and challenges behind 5G ...

[Learn More](#)

5G



5G will be the new generation of mobile connectivity. The connection will be faster and more reliable, and will bring previously unknown possibilities for citizens and business. ...

[Learn More](#)



Mobile Communication Network Base Station Deployment Under 5G

This paper discusses the site optimization technology of mobile communication network, especially in the aspects of enhancing coverage and optimizing base station layout. ...

[Learn More](#)



[3G / 4G / 5G coverage in Amsterdam, North Holland,](#)

This map represents the coverage of 2G, 3G, 4G and 5G mobile network in Amsterdam, North Holland. See also : mobile bitrates map in Amsterdam, North Holland and mobile networks ...

[Learn More](#)



Contact Us

For catalog requests, pricing, or partnerships, please visit:
<https://fundacjawandea-imk.pl>



Scan QR Code for More Information



<https://fundacja-wandea-imk.pl>