

# **A 5G base station consumes electricity per day**





## Overview

---

The 5G NR standard has been designed based on the knowledge of the typical traffic activity in radio networks as well as the need to support sleep states in radio network equipment. By putting the base sta.

What is the energy consumption of a 5G network?

The energy consumption of 5G networks is one of the pressing concerns in green communications. Recent research is focused towards energy saving techniques of base stations (BSs). BSs are one of the most power consuming elements of a 5G network. It is important to model their energy consumption for analyzing overall energy efficiency of a network.

Are 5G base stations causing more energy consumption?

However, Li says 5G base stations are carrying five times the traffic as when equipped with only 4G, pushing up power consumption. The carrier is seeking subsidies from the Chinese government to help with the increased energy usage.

How much power does a 5G base station consume?

That's almost a threefold increase compared to 4G (5). One 5G base station is estimated to consume about as much power as 73 households (6), and 3x as much as the previous generation of base stations (5), (7).

Does 5G increase energy consumption?

However, this technological leap comes with a substantial increase in energy consumption. Compared to its predecessor, the fourth-generation (4G) network, the energy consumption of the 5G network is approximately three times higher .



## A 5G base station consumes electricity per day

---



### AI-based energy consumption modeling of 5G base stations: an energy

The energy consumption of 5G networks is one of the pressing concerns in green communications. Recent research is focused towards energy saving techniques of base ...

[Learn More](#)

### Base Station Energy Consumption Analysis , Huijue Group E ...

The Silent Energy Crisis in Mobile Networks Did you know a single 5G base station consumes up to 3.7kW - 68% more than its 4G predecessor? As global mobile data traffic surges 35% ...

[Learn More](#)



### 5G base stations use a lot more energy than ...

Carriers have been looking at energy efficiency for a few years now, but 5G will bring this to top of mind because it's going to use more energy than 4G. Telcos spend on average 5% to 6% of their operating ...

[Learn More](#)



### 5G base stations use a lot more energy than 4G base stations...

Carriers have been looking at energy efficiency for a few years now, but 5G will bring this to top of mind because it's going to use more energy than 4G. Telcos spend on ...



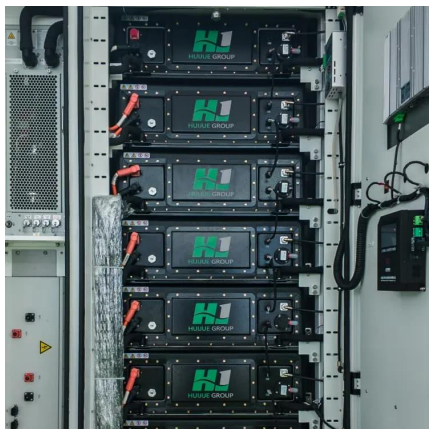
[Learn More](#)



### [5G network deployment and the associated energy ...](#)

The simulation results show that 700 MHz and 26 GHz will play an important role in 5G deployment in the UK, which allow base stations to meet short-term and long-term data ...

[Learn More](#)



### [Why does 5g base station consume so much ...](#)

The power consumption of the 5G base station mainly comes from the AU module processing and conversion and high power-consuming high radio frequency signals, the extremely high-algorithm and high ...

[Learn More](#)



### [5G base station saves energy and reduces consumption](#)

A base station generally consumes 3 AAU. Installation can save 15 yuan in one day. Based on a total of 400,000 5G base stations built at that time, it would save 6 million ...

[Learn More](#)

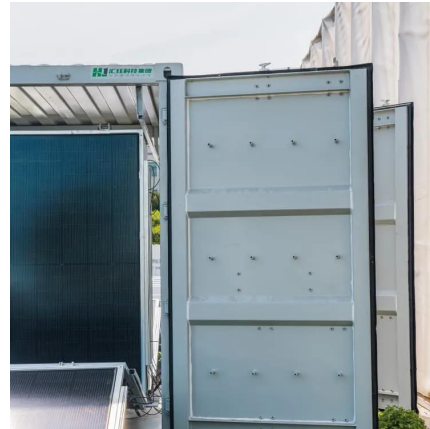




### [How much power does 5G consume?](#)

One 5G base station is estimated to consume about as much power as 73 households (6), and 3x as much as the previous generation of base stations (5), (7). When base stations, data centers and devices are added ...

[Learn More](#)



### [Why does 5g base station consume so much power and how ...](#)

The power consumption of the 5G base station mainly comes from the AU module processing and conversion and high power-consuming high radio frequency signals, the ...

[Learn More](#)



### [A technical look at 5G energy consumption and performance](#)

How can 5G increase performance and ensure low energy consumption? Find out in our latest Research blog post.

[Learn More](#)



### [What is the Power Consumption of a 5G Base Station?](#)

Compared to its predecessor, 4G, the energy demand from 5G base stations has massively grown owing to new technical requirements needed to support higher data rates ...

[Learn More](#)

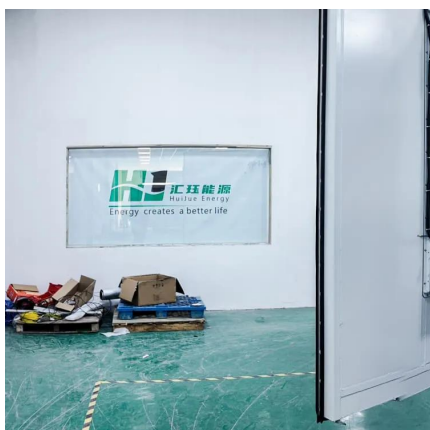




### [Modelling the 5G Energy Consumption Using Real-world ...](#)

Accurate energy consumption modeling is essential for developing energy-efficient strategies, enabling operators to optimize resource utilization while maintaining network ...

[Learn More](#)



### [How much power does 5G consume?](#)

One 5G base station is estimated to consume about as much power as 73 households (6), and 3x as much as the previous generation of base stations (5), (7). When base stations, data centers ...

[Learn More](#)

## Contact Us

---

For catalog requests, pricing, or partnerships, please visit:  
<https://fundacjawandea-imk.pl>

**Scan QR Code for More Information**



<https://fundacjawandea-imk.pl>