

5mw wind turbine transmission system design





Overview

What is a wind turbine transmission system?

A wind turbine transmission system is a critical component for converting wind energy into electrical energy. Wind turbine drivetrains are continually being developed to be lightweight and produced in large scale to improve the power density and power generation of wind turbines.

Which curves are included in a 5-MW reference wind turbine?

Also, the included curves are the generator power and generator C_p . Aerodynamic power and C_p are available at the source. Jonkman, J., S. Butterfield, W. Musial, and G. Scott. 2009. Definition of a 5-MW Reference Wind TURbine for Offshore System Development.

Is NREL 5MW a land-based wind turbine?

To provide a cursory overview of the overall system behavior of the equivalent land-based version of the NREL 5-MW baseline wind turbine, we calculated the full-system natural frequencies and the steady-state response of the system as a function of wind speed.

Are wind turbine drivetrains lightweight?

Wind turbine drivetrains are continually being developed to be lightweight and produced in large scale to improve the power density and power generation of wind turbines. However, there are many challenges in drivetrain system design, particularly for lightweight structural designs.



5mw wind turbine transmission system design



[Design of the OffWindChina 5 MW Wind Turbine Rotor](#)

For example, FLEX5 the computational wind turbine structural cost varies uses dynamics, due to the the different modal while HAWC2 uses a finite-element approach involving a higher ...

[Learn More](#)

[Analysis of a Wind Turbine Power Transmission System ...](#)

This paper explores some of the design rationale behind such a power transmission system and uses exergy analysis to explain and evaluate its operation. Keywords: Wind turbines, energy ...

[Learn More](#)



[NREL_5MW_126_RWT -- NREL/turbine ...](#)

This turbine model originates from a 2019 NREL Technical Report 1 and more details are available in 2. Note: (from Forum) RotThrust is axial force including some contribution from the rotor weight (not purely ...

[Learn More](#)



Design and control of the mechanical-hydraulic hybrid transmission

As wind turbines become larger and move into deeper sea, their operating environment worsen. The torque fluctuation inside the drive chain is aggravated, which leads ...



[Learn More](#)



[The 5 MW DeepWind floating offshore vertical wind...](#)

Abstract Floating vertical-axis wind turbines for offshore wind energy present a concept with novelty and potentials for reducing COE. Cost reduction for offshore wind power plants is an ...

[Learn More](#)



[Comprehensive layout optimization of the ...](#)

The design of the transmission system for offshore wind farm cluster is an integrated optimization problem that can be divided into three layers: (1) optimization for the offshore substation location, (2) path ...

[Learn More](#)



[Equivalent scaling method for the transient dynamic ...](#)

With the development of wind turbine gearbox towards 10MW and above ultra-high power, the problem of the full-size testing is limited by the power of the test stand becomes ...

[Learn More](#)





[Definition of a 5-MW Reference Wind Turbine for ...](#)

The Recommendations for Design of Offshore Wind Turbines project (known as RECOFF) based its conceptual design calculations on a wind turbine with a 5-MW rating [32].

[Learn More](#)



Comprehensive layout optimization of the transmission system ...

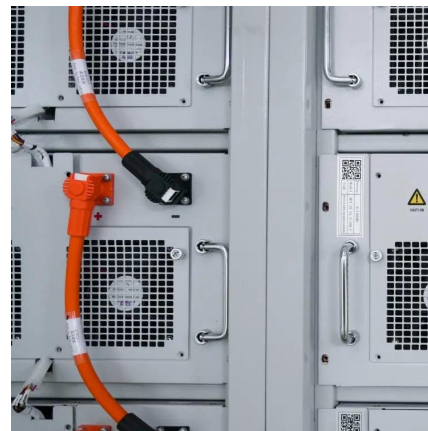
The design of the transmission system for offshore wind farm cluster is an integrated optimization problem that can be divided into three layers: (1) optimization for the ...

[Learn More](#)

[5mw wind turbine transmission system design](#)

Analysis of NREL-5MW wind turbine wake under varied Additionally, it is equipped with a variable-speed transmission system that adjusts the rotational speed of the generator according to ...

[Learn More](#)



[NREL_5MW_126_RWT -- NREL/turbine-models power curve ...](#)

This turbine model originates from a 2019 NREL Technical Report 1 and more details are available in 2. Note: (from Forum) RotThrust is axial force including some ...

[Learn More](#)



Dynamic modelling and dynamic characteristics of wind turbine

The design of large wind turbine drivetrain systems is trending towards light weight and integration. To ensure the safe operation of the drivetrain system, investigating the ...

[Learn More](#)



Contact Us

For catalog requests, pricing, or partnerships, please visit:
<https://fundacjawandea-imk.pl>

Scan QR Code for More Information



<https://fundacjawandea-imk.pl>