

5g signal base station electricity fee





Overview

Does a balanced dataset improve energy prediction of 5G base stations?

For energy prediction of 5G base stations, this thesis finds that using a more balanced dataset, in terms of the number of samples for each product, has a positive impact for the ANN and the Gradient Boosted Trees model while the linear regression performs worse.

Does 5G New Radio save energy?

Emerging use cases and devices demand higher capacity from today's mobile networks, leading to increasingly dense network deployments. In this post, we explore the energy saving features of 5G New Radio and how this enables operators to build denser networks, meet performance demands and maintain low 5G energy consumption.

Does 5G cost more energy than 4G?

A report from GSMA about 5G network cost suggests up to 140% more energy consumption than 4G . Energy saving measures in MNOs are needs rather than nice-to-have. What is more important is that sustainability has risen to the top of the agenda for many industries, including telecoms.

Can network energy saving technologies mitigate 5G energy consumption?

This technical report explores how network energy saving technologies that have emerged since the 4G era, such as carrier shutdown, channel shutdown, symbol shutdown etc., can be leveraged to mitigate 5G energy consumption.



5g signal base station electricity fee



Threshold-based 5G NR base station management for energy ...

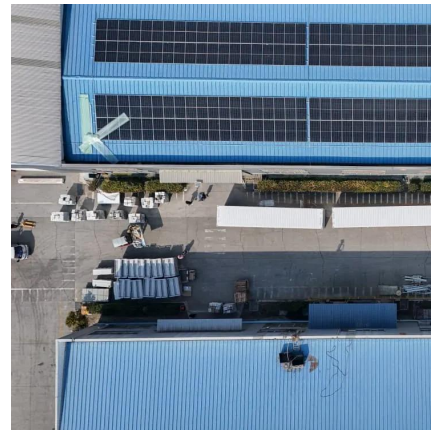
In spite of promising outcomes in optimizing energy usage for Radio Access Network (RAN) Base Station (BS) hardware, deployment, and resource management, existing ...

[Learn More](#)

[Is 5G a waste of electricity? Experts say it's ...](#)

A 5G base station consumes "four times more electricity" than its 4G counterpart, said Ding Haiyu, head of wireless and terminals at the China Mobile Research Institute, during a symposium on 5G and carbon ...

[Learn More](#)



[Is 5G a waste of electricity? Experts say it's complicated](#)

A 5G base station consumes "four times more electricity" than its 4G counterpart, said Ding Haiyu, head of wireless and terminals at the China Mobile Research Institute, during ...

[Learn More](#)



[Why does 5g base station consume so much ...](#)

The power consumption of the 5G base station mainly comes from the AU module processing and conversion and high power-consuming high radio frequency signals, the extremely high-algorithm and high ...



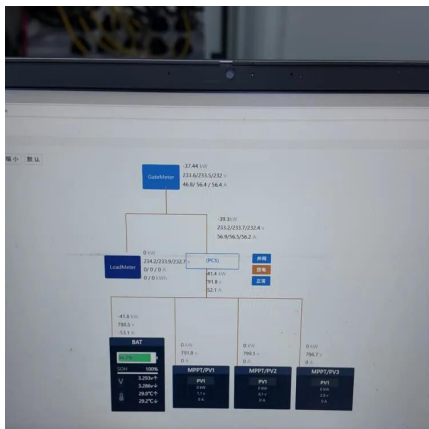
[Learn More](#)



[Energy Consumption Modelling for 5G Radio Base ...](#)

Mathematical optimization of energy consumption requires a model of the problem at hand. In this thesis linear regression is compared with the gradient boosted trees method and a neural ...

[Learn More](#)



Communication Base Station Cost Optimization: Navigating the 5G ...

The \$87 Billion Question: Can We Build Smarter Networks? As global 5G deployments accelerate, communication base station cost optimization has become the linchpin of telecom ...

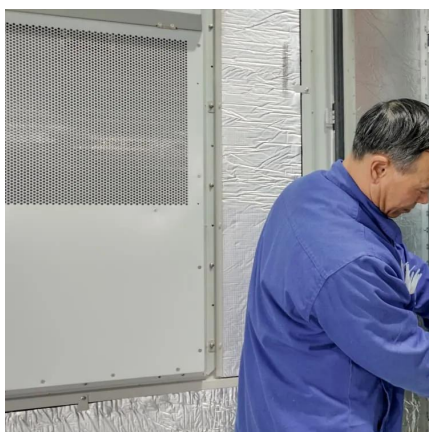
[Learn More](#)



[Final draft of deliverable D.WG3-02-Smart Energy Saving ...](#)

Change Log This document contains Version 1.0 of the ITU-T Technical Report on "Smart Energy Saving of 5G Base Station: Based on AI and other emerging technologies to ...

[Learn More](#)



[How much is the electricity cost for the State Grid 5G ...](#)



The power consumption of a single 5G station is 2.5 to 3.5 times higher than that of a single 4G station. The main factor behind this increase in 5G power consumption is the high ...

[Learn More](#)



[Why does 5g base station consume so much power and how ...](#)

The power consumption of the 5G base station mainly comes from the AU module processing and conversion and high power-consuming high radio frequency signals, the ...

[Learn More](#)



[A technical look at 5G energy consumption and performance](#)

How can 5G increase performance and ensure low energy consumption? Find out in our latest Research blog post.

[Learn More](#)



[5g energy base station electricity fee](#)

A 5G base station is mainly composed of the baseband unit (BBU) and the AAU -- in 4G terms, the AAU is the remote radio unit (RRU) plus antenna. The role of the BBU is to ...

[Learn More](#)



[Modelling the 5G Energy Consumption Using Real-world ...](#)



Accurate energy consumption modeling is essential for developing energy-efficient strategies, enabling operators to optimize resource utilization while maintaining network ...

[Learn More](#)



Contact Us

For catalog requests, pricing, or partnerships, please visit:
<https://fundacjawandea-imk.pl>

Scan QR Code for More Information



<https://fundacjawandea-imk.pl>