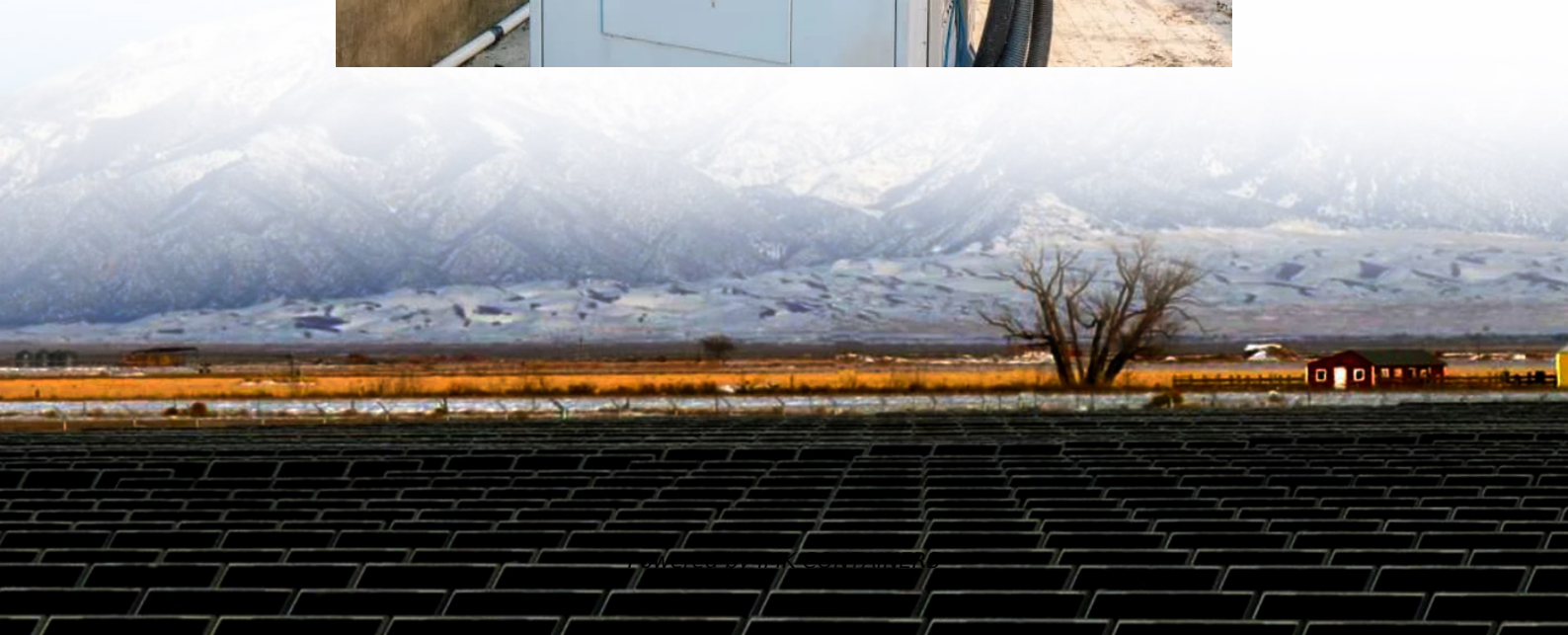


# 5g base station equipment power





## Overview

---

Will 5G use micro-cells?

Therefore, in 5G networks, high-frequency resources will no longer use macro base stations, micro-cells become the mainstream, and the small base stations will be used as the basic unit for ultra-intensive networking, that is, small base stations dense deployment.

What is 3GPP base station model?

The central specification body of cellular networks, the 3GPP, presents a base station model to facilitate energy efficiency improvements for 3GPP Release 18 in . It is based on the user equipment power model of the 3GPP in structure, presentation, and approach.

What should be considered in a 5G network?

The further completion of the map of power models (Fig. 2) and systematization of their features as well as the comparison is also part of the future work. Lastly, the aspects of computing (network function virtualization) and functional split options of the RAN need to be considered for 5G networks as well.

What is a 5G Brain Center?

Often referred to as the brain center, this includes: Baseband Unit (BBU): Handles baseband signal processing. Remote Radio Unit (RRU): Converts signals to radio frequencies for transmission. Active Antenna Unit (AAU): Integrates RRU and antenna for 5G-era efficiency. 2. Power Supply System



## 5g base station equipment power

---



### [Why does 5g base station consume so much ...](#)

The power consumption of the 5G base station mainly comes from the AU module processing and conversion and high power-consuming high radio frequency signals, the extremely high-algorithm and high ...

[Learn More](#)

### [Complete Guide to 5G Base Station ...](#)

Explore how 5G base stations are built--from site planning and cabinet installation to power systems and cooling solutions. Learn the essential components, technologies, and challenges behind 5G ...

[Learn More](#)



### [Study on Power Feeding System for 5G Network](#)

High Voltage Direct Current (HVDC) power supply HVDC systems are mainly used in telecommunication rooms and data centers, not in the Base station. With the increase of ...

[Learn More](#)



### **Optimal energy-saving operation strategy of 5G base station ...**

To further explore the energy-saving potential of 5 G base stations, this paper proposes an energy-saving operation model for 5 G base stations that incorporates ...



[Learn More](#)



### [What is the Power Consumption of a 5G Base Station?](#)

As 5G becomes the new normal, questions of 5G base station power consumption become more relevant than ever, not only for operators eager to manage their costs but also ...

[Learn More](#)



### **Complete Guide to 5G Base Station Construction , Key Steps, Equipment**

Explore how 5G base stations are built--from site planning and cabinet installation to power systems and cooling solutions. Learn the essential components, technologies, and ...

[Learn More](#)



### **Comparison of Power Consumption Models for 5G Cellular Network Base**

Additional discussion of power models for radio access network, user equipment, and the system level as well as further remarks on base station power models can be found in ...

[Learn More](#)





### [Building better power supplies for 5G base stations](#)

Building better power supplies for 5G base stations  
Authored by: Alessandro Pevere, and  
Francesco Di Domenico, both at Infineon  
Technologies

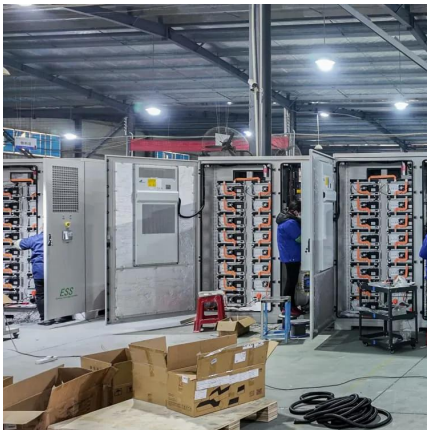
[Learn More](#)



### [Equipment Needed to Build a 5G Base Station](#)

Overview of 5G base station equipment, components, and layered architecture covering antenna systems, RRU/BBU functions, transmission, power, and monitoring.

[Learn More](#)



### [Selecting the Right Supplies for Powering 5G Base Stations](#)

Additionally, these 5G cells will also include more integrated antennas to apply the massive multiple input, multiple output (MIMO) techniques for reliable connections. As a result, a ...

[Learn More](#)



### [Selecting the Right Supplies for Powering 5G Base ...](#)

It includes everything needed to power 5G base station components, including software design and simulation tools like LTpowerCAD and LTspice. These tools simplify the ...

[Learn More](#)





### [Why does 5g base station consume so much power and how ...](#)

The power consumption of the 5G base station mainly comes from the AU module processing and conversion and high power-consuming high radio frequency signals, the ...

[Learn More](#)



## Contact Us

---

For catalog requests, pricing, or partnerships, please visit:  
<https://fundacjawandea-imk.pl>

### Scan QR Code for More Information



<https://fundacjawandea-imk.pl>