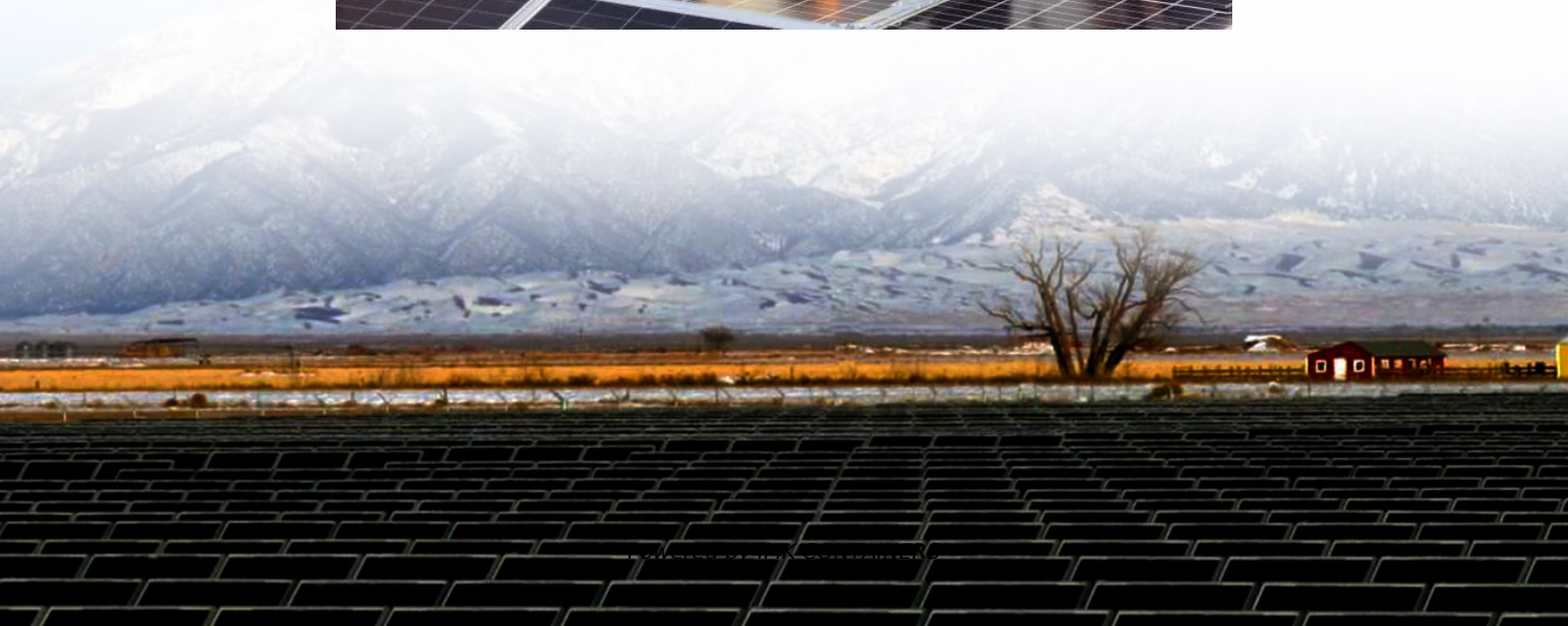
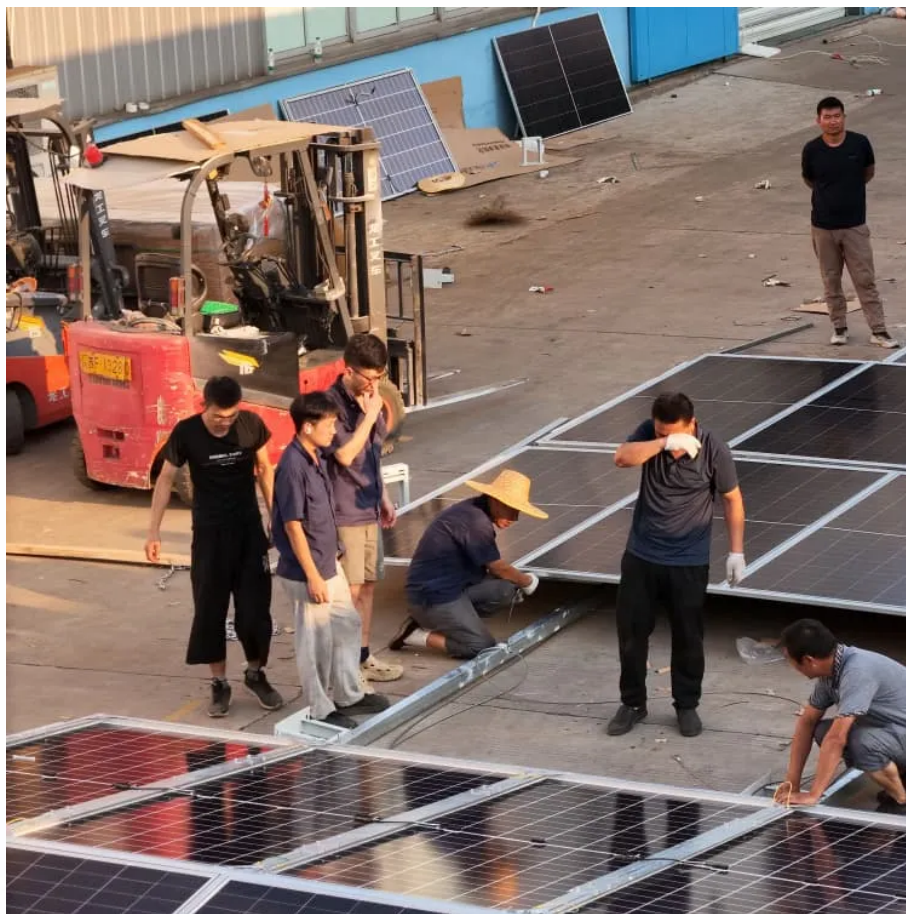


500kw inverter selection





Overview

What is a solar Ware 500 inverter?

The SOLAR WARE 500 is an advanced multilevel inverter system offering up to 500kW, with an operating range of 320 ~ 600 V. SOLAR WARE 500 operates at 97.7% maximum efficiency. With high efficiency and robust design, TMEIC can significantly maximize array performance and uptime.

What is the smallest 500 kW inverter?

The SOLAR WARE 500 advanced multilevel inverter uses a new circuit topology to create 3 output voltage levels. With this new design, the inverter size has also been significantly reduced, achieving the world's smallest 500 kW inverter, with switching loss reduced by 56%.

Which solar inverters are suitable for multi-megawatt power plants?

The inverters are available from 100 kW up to 500 kW, and are optimized for cost-efficient multi-megawatt power plants. The ABB solar inverters have been developed on the basis of decades of experience in the industry and proven technology platform.

How much does a 500KW inverter cost?

The cost of a 500kw inverter ranges from 10 to 99999. The price of a 500kw inverter varies by different parameters. Haven't found what you want?

Post sourcing requests and get quotations quickly. Stay updated to what's new and popular on the market.



500kw inverter selection



A Complete Guide to 500kw Inverter: Specifications, Types, ...

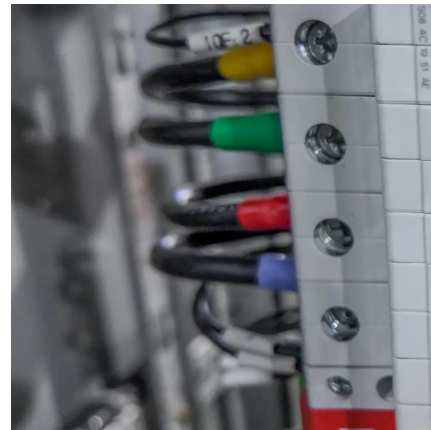
Discover everything about the 500kw inverter: key specifications, performance metrics, types, and real-world applications in solar, industrial, and commercial energy systems.

[Learn More](#)

[ABB central inverters](#)

at system who require inverters for large photovoltaic power plants and industrial and commercial buildings. The inverters are available from 100 kW up to 500 kW, and are ...

[Learn More](#)



Solar Ware 500

TMEIC's utility scale inverters include the latest interconnection technology. The SOLAR WARE 500 is an advanced multilevel inverter system offering up to 500kW, with an operating range of ...

[Learn More](#)

[500kW Inverter: Powering Industrial and Renewable Energy ...](#)

The global 500kW+ inverter market is projected to grow 14.2% annually through 2028, driven by renewable energy mandates. Leading manufacturers now offer liquid-cooled variants



that ...

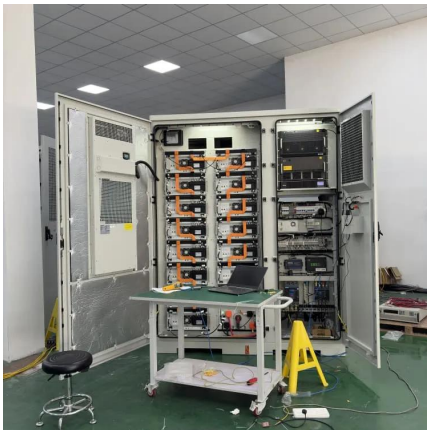
[Learn More](#)



[500kW Solar Storage Hybrid Inverter-15kW 25kW 30kW ...](#)

500kW Solar Storage Hybrid Inverter Detailed Product Description Including PCS, MPPT, Local EMS, PCM parallel and off-grid switching unit power distribution unit, oil engine control, ...

[Learn More](#)



[Advanced Energy AE_500TX-480 500KW](#)

...

Product Description AE 500T Advanced Energy, AE 500TX grid tied Central inverter, 3-Ph, 500kW, 480VAC, 60H The AE 500TX is designed for ...

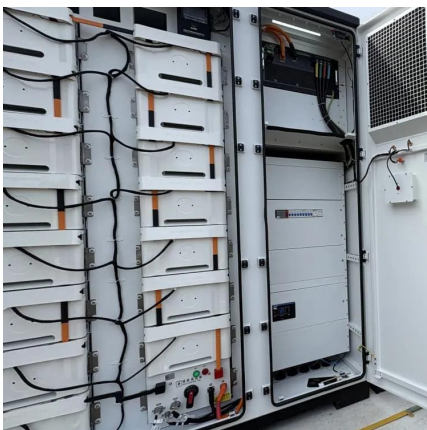
[Learn More](#)



[500kw inverter selection](#)

TMEIC's utility scale inverters include the latest interconnection technology. The SOLAR WARE 500 is an advanced multilevel inverter system offering up to 500kW, with an operating range of ...

[Learn More](#)





Solar Ware 500

TMEIC's utility scale inverters include the latest interconnection technology. The SOLAR WARE 500 is an advanced multilevel inverter system offering up to 500kW, with an operating range of 320 ~ 600 V.

[Learn More](#)



[Solar inverters ABB central inverters PVI-500.0-CN 500 ...](#)

ABB's new 500kW utility-grade central inverters have a number of key features. It offers high efficiency with electrolytic capacitor-free leading to longer MTBF (mean time ...

[Learn More](#)

[Solar Inverters ESL 500kW-750kW - EnSmart Power](#)

500/630/750kW Central Grid - Tied PV Inverter EnSmart provides highly integrated solutions for large-scale centralized PV Plants. Usually, the installation capacity of this PV ...

[Learn More](#)



[Advanced Energy AE_500TX-480 500KW Inverter](#)

Product Description AE 500T Advanced Energy, AE 500TX grid tied Central inverter, 3-Ph, 500kW, 480VAC, 60H The AE 500TX is designed for larger commercial and utility scale ...

[Learn More](#)



[Solar Inverters ESL 500kW-750kW - EnSmart ...](#)

500/630/750kW Central Grid - Tied PV Inverter
EnSmart provides highly integrated solutions for large-scale centralized PV Plants. ...

[Learn More](#)



[500kW Solar Inverters](#)

These inverters can handle a range of power sources from 500,000 watts to 999,999 watts. Compare these 250kW commercial solar inverters from ABB, Fronius, SMA, SolarEdge, ...

[Learn More](#)

Contact Us

For catalog requests, pricing, or partnerships, please visit:
<https://fundacjawandea-imk.pl>

Scan QR Code for More Information



<https://fundacjawandea-imk.pl>