

33V Inverter for Solar Panels





33V Inverter for Solar Panels



[How does a "regulating" source follower work?](#)

To understand how a circuit works you need first to understand the ideas on which it is built. The best way to do this is by following the step-by-step evolution of a conceptual ...

[Learn More](#)

[Help with a constant-voltage LED driver](#)

In this case the voltage range of the new constant current driver would need to extend to at least 33V and significantly lower (no lower limit is given on the old driver) and it ...

[Learn More](#)



[+-33V Overvoltage and reverse polarity protection](#)

+-33V Overvoltage and reverse polarity protection Ask Question Asked 4 years, 8 months ago Modified 4 years, 8 months ago

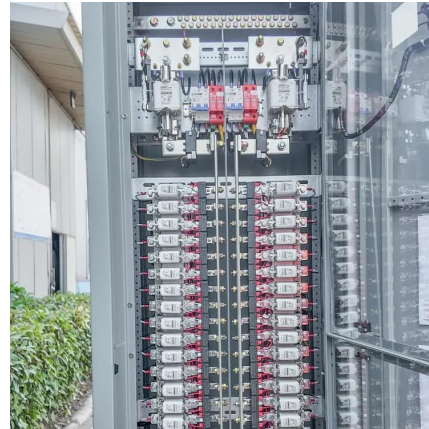
[Learn More](#)



[Help to identify odd diodes, \$V_f=1.33V @3.9mA\$](#)

I just came across a pair of unusual diodes used as clipping diodes for a compressor/distortion pedal for guitar (Guyatone PS-011). $V_f=1.33V @3.91mA$. Can this be ...

[Learn More](#)



[33V to 20V Buck Converter \(Revision 3\)](#)

33V to 20V Buck Converter (Revision 3) -
Feedback Needed Ask Question Asked 5 months
ago Modified 5 months ago

[Learn More](#)



voltage

The approximate output voltage under load will
be 32V (you also need to subtract the the peak-
to-peak ripple) and account for the 3V or so drop
of the LM317 and account for ...

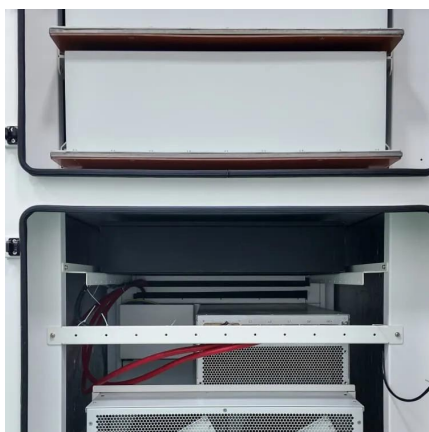
[Learn More](#)



How can I use my two 33v solar panels to charge my two 12v ...

Will solution require a "charge controller"?
Presently, trailer has two 12v batteries in parallel
connected to the 12v. trailer circuit. The two 33v
solar panels were originally for ...

[Learn More](#)





33V residual AC voltage in domestic circuit when switched ...

There is something strange going on but, with a 240V supply, 33V sounds suspiciously like a Neutral-to-Earth kind of voltage accompanied by a not particularly inspired ...

[Learn More](#)



0-10V or 4-20mA conversion to 0-3.3V for Microcontroller ADC

Higher value increases protection. Lower value increases bandwidth. R1, R2 and R3 are set to provide 0V-10V and 0mA-20mA inputs to 0V-3.3V ADC input, respectively. You ...

[Learn More](#)

[operational amplifier](#)

So essentially looking for the most efficient and effective way to take a 3V 50hz AC signal and convert it to an 11-33V DC signal (any voltage between 11 and 33 works for an ...

[Learn More](#)



Contact Us

For catalog requests, pricing, or partnerships, please visit:
<https://fundacjawandea-imk.pl>



Scan QR Code for More Information



<https://fundacjawandea-imk.pl>