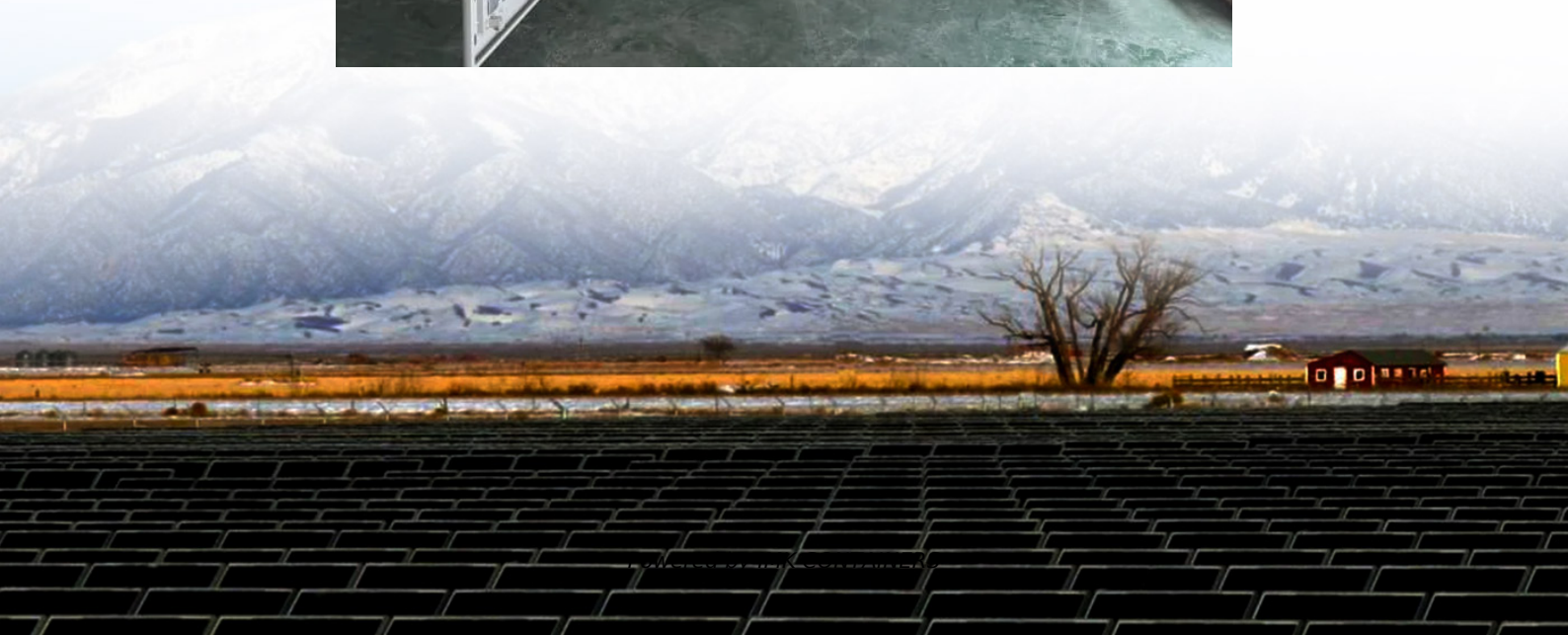


# **30mw solar power station generator protection design**





## Overview

---

How to protect a power system if a generator loses power?

Power systems have little capacity for energy storage. As such, lost generation must be immediately replaced or an equivalent amount of load must be shed. It is of primary importance that the protection system for the generator is highly secure during external disturbances. a prime mover, an exciter, and various auxiliary systems.

What types of mounting systems can be used for PV power plants?

There are several different types of mounting systems that can be used for PV power plants, such as fixed-tilt support structures, single- or double-axis tracking structures, marine-grade support structures that prevent corrosion, and so forth.

What is generator protection scheme?

Generator protection scheme. At substations, the lines, interconnecting transformers, and reactors constitute major static power components crucial for system operation. The transformer, depicted in Fig. 6, is a localized element featuring two sets of delicate windings that may directly or indirectly experience fault currents.

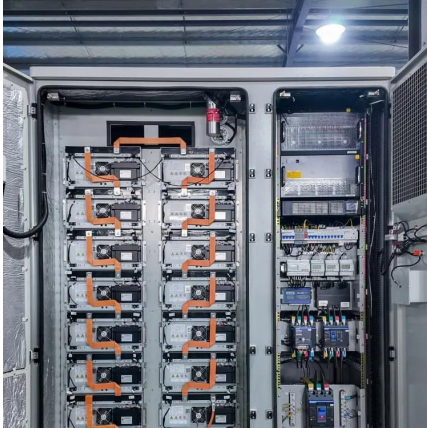
How to design a large-scale PV power plant?

Designing a large-scale PV power plant requires infrastructure that can handle such an installation. For instance, the location must be selected carefully to avoid shading from buildings, trees, or other obstructions.



## 30mw solar power station generator protection design

---



### [Learning Unit: Generator Protection in Power Plants ...](#)

Generator protection  
Generator protection system  
Configuration of the power plant  
Type of generators / prime mover  
Grounding of the generator

[Learn More](#)

### [Generator Protection Theory](#)

Power Authorities wishing to have synchronous measurement and reporting of power system Phasor information can use a generator relay (G60) to provide this ...

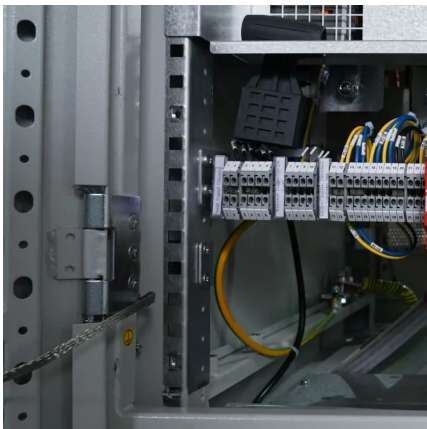
[Learn More](#)



### **Generator Protection and Insulation in Critical Environments ...**

Calculate generator protection and insulation requirements for critical environments with IEEE and IEC standards using this precise, easy-to-use calculator.

[Learn More](#)



## **30 MWp PV PLANT**

With outdoor design and IP66 ingress protection rating, SG250HX are very resistant to harsh environment conditions. The smart forced air cooling also ensure long ...



[Learn More](#)



### [A Guide to Large Photovoltaic Powerplant Design](#)

Designing a photovoltaic power plant on a megawatt-scale is an endeavor that requires expert technical knowledge and experience. There are many factors that need ...

[Learn More](#)



### [Surge Protective Solutions for Photovoltaic Systems](#)

Surge Protective Solutions for Photovoltaic Systems The desire to find cleaner, more cost-efficient and safer power generation alternatives has led to increased construc-tion ...

[Learn More](#)



### [A Guide to Large Photovoltaic Powerplant Design](#)

Designing a photovoltaic power plant on a megawatt-scale is an endeavor that requires expert technical knowledge and experience. There are many factors that need to be ...

[Learn More](#)







## Design, Construction and Typical Case Analysis of Solar PV Power ...

The ground PV Power Station mainly consists of the PV array, lightning protection junction box, DC power distribution cabinet, grid- connected inverter, AC power distribution ...

[Learn More](#)



## GENERATOR AND POWER SYSTEM PROTECTION 21-08-23

And, finally, with a comprehensive consideration of generator protection, delegates will learn the principles of high speed protection for generator stator and rotor faults, while ...

[Learn More](#)

## A guide to protection schemes of synchronous generator ...

In this article, the selection of specific protection schemes and the calculation settings for 600 MW synchronous generator-connected lines and transformers are discussed. ...

[Learn More](#)



## Paper Title (use style: paper title)

Design drawings, generator type (synchronous, wind turbine generator (WTG), or solar photovoltaic (PV) inverter, etc.) and characteristic data, transformer configuration and ...

[Learn More](#)



## Contact Us

---

For catalog requests, pricing, or partnerships, please visit:  
<https://fundacjawandea-imk.pl>

### Scan QR Code for More Information



<https://fundacjawandea-imk.pl>