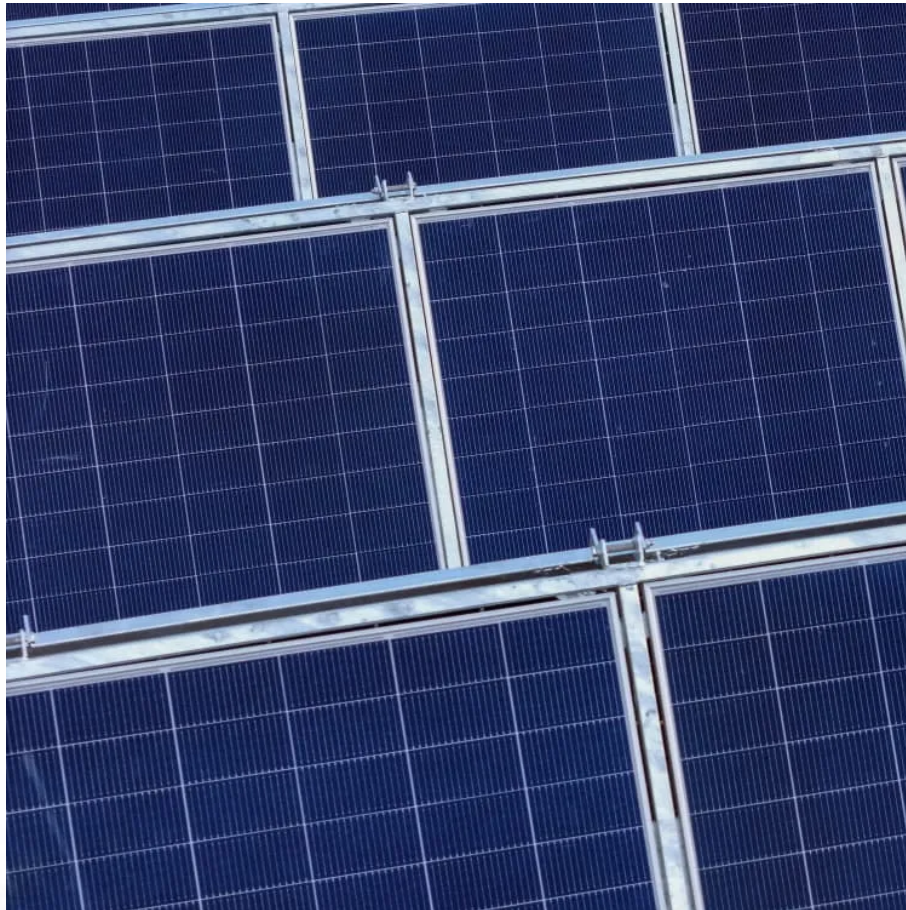


## **200 square meters of solar panels for self-use**





## Overview

---

How many square feet does a 20-panel Solar System need?

A typical 20-panel system needs 340-400 square feet of unshaded roof area. Orientation: South-facing roofs provide maximum energy production Tilt: 30-45 degree angles optimize solar collection Shading: Minimal obstruction from trees, chimneys, or neighboring buildings Age: Roofs should have 10+ years of remaining life before panel installation.

How much solar power is generated per square metre?

The amount of solar power generated per square metre varies based on the type of solar panel used. Here's a comparison: 1. Monocrystalline Solar Panels – Up to 22% efficiency, producing 220W per square metre. 2. Polycrystalline Solar Panels – Around 18% efficiency, generating 180W per square metre. 3.

How much space do solar panels need?

SolarTech's regional production data helps hit that sweet spot for maximum value and performance. Each solar panel requires approximately 17-20 square feet of roof space, including necessary spacing for installation and maintenance. A typical 20-panel system needs 340-400 square feet of unshaded roof area.

How efficient are solar panels?

Solar panel efficiency is improving at 1%-1.5% annually. With smart system design and emerging technologies, modern photovoltaic systems can outperform theoretical estimates, delivering clean energy more effectively than ever. When panel efficiency reaches 30%, a 100m<sup>2</sup> roof could generate 50,000kWh/year – enough to power 20 average homes.



## 200 square meters of solar panels for self-use

---



### [Solar Energy Generation Per Square Metre: A ...](#)

With the rising demand for renewable energy, solar panels for home have become a popular choice for homeowners looking to reduce electricity bills and contribute to a sustainable future. But before making ...

[Learn More](#)

### [How much does solar energy cost for 200 square meters](#)

For a 200 square-meter installation, the range may be between 10 kW and 20 kW, depending on energy usage levels and preferences for excess energy production. The total ...

[Learn More](#)



### [Solar Panel Output Per Square Meter](#)

Discover how much electricity solar panels generate per square meter, explore efficiency factors, technology comparisons, and future innovations in photovoltaic energy.

[Learn More](#)



### [Total Area Required for Solar Panel Installation Calculator](#)

Calculate the total area needed for your solar panel installation quickly and accurately with our easy-to-use solar panel area calculator.

[Learn More](#)





### [How Many Solar Panels Do I Need to Be Self-Sufficient?](#)

Find out how many solar panels your home needs to be self-sufficient with our guide. Use our solar panel calculator today.

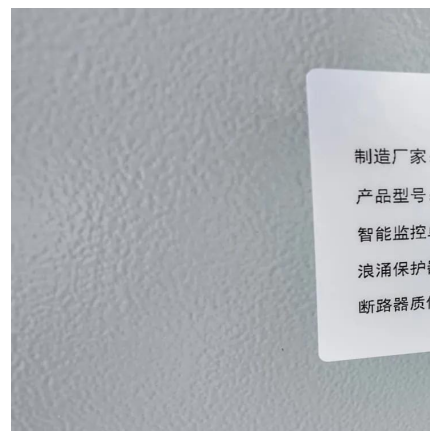
[Learn More](#)



### [Total Area Required for Solar Panel...](#)

Calculate the total area needed for your solar panel installation quickly and accurately with our easy-to-use solar panel area calculator.

[Learn More](#)



### [How Many Solar Panels Do I Need? 2025 ...](#)

How many solar panels do I need? Use our 2025 calculator to size your system by home size, kWh usage, and location. Get panel count, roof space, and kW--free from SolarTech.

[Learn More](#)





### [How many solar panels do I need on my house to become ...](#)

But if you try to power the same sized house in Vermont, where the average solar insolation per year is around 4 kWh/meters squared/day, you'll need 80 square meters (861 sq ft) of 15 ...

[Learn More](#)



### [How many solar panels do I need for my home? 2025 guide](#)

We estimate that a typical home needs between 17 and 21 solar panels to cover 100 percent of its electricity usage. To determine how many solar panels you need, you'll need ...

[Learn More](#)

### [How many solar panels do I need for my ...](#)

We estimate that a typical home needs between 17 and 21 solar panels to cover 100 percent of its electricity usage. To determine how many solar panels you need, you'll need to know: your annual electricity ...

[Learn More](#)



### [How many square meters of solar panels does a family need?](#)

The efficiency of solar panels currently ranges from 150 to 200 watts peak per square meter (Wp/m<sup>2</sup>). For our calculations, we will therefore use an average value of 175 Wp/m<sup>2</sup>.

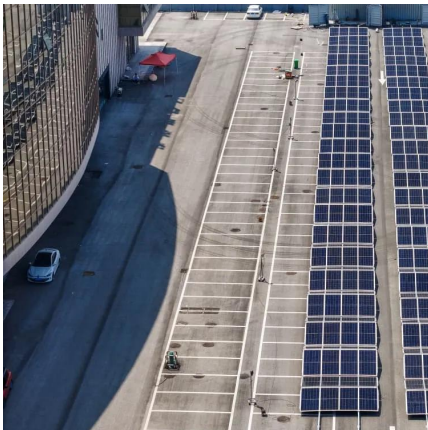
[Learn More](#)



### [Solar Power Per Square Meter Calculator](#)

Your roof's orientation, local climate, shading, and even the dust on your panels can slash that output by 30-50%. This comprehensive guide reveals exactly how to calculate your solar ...

[Learn More](#)



### [Solar Energy Generation Per Square Metre: A Complete Guide](#)

With the rising demand for renewable energy, solar panels for home have become a popular choice for homeowners looking to reduce electricity bills and contribute to a ...

[Learn More](#)



### [How much does solar energy cost for 200 ...](#)

For a 200 square-meter installation, the range may be between 10 kW and 20 kW, depending on energy usage levels and preferences for excess energy production. The total cost can increase or ...

[Learn More](#)



### **How Many Solar Panels Do I Need? 2025 Calculator , SolarTech**

How many solar panels do I need? Use our 2025 calculator to size your system by home size, kWh usage, and location. Get panel count, roof space, and kW--free from SolarTech.

[Learn More](#)



### [How many square meters of solar panels ...](#)

The efficiency of solar panels currently ranges from 150 to 200 watts peak per square meter (Wp/m<sup>2</sup>). For our calculations, we will therefore use an average value of 175 Wp/m<sup>2</sup>.

[Learn More](#)



## Contact Us

---

For catalog requests, pricing, or partnerships, please visit:  
<https://fundacjawandea-imk.pl>

### Scan QR Code for More Information



<https://fundacjawandea-imk.pl>