

12V conversion 220 inverter





Overview

What is a simple 12V to 220V inverter?

Simple 12V to 220V inverters find widespread use in automotive applications, solar power systems, emergency backup power, and portable power solutions. Understanding load characteristics helps determine appropriate inverter specifications and ensures reliable operation.

What is a 12V inverter?

A 12V inverter is an electronic device that converts 12V DC power into 220V AC power. This type of inverter is typically used to convert automotive or other 12V DC power sources into standard household or industrial power to power a variety of devices. inverter.com provides inverters from 300w to 3000w.

What is a 12V 300 watt inverter?

12V 300-watt power inverter for sale. The modified sine wave inverter delivers 600-watt peak power and converts 12V DC from battery or car lighter to AC 110V or 220V household power. Come with a USB port, 12V to 110V inverter can be a universal outlet for fast-charging electronic devices.

What is a 1000 watt 12V power inverter?

1000 watt 12V power inverter for sale, input voltage DC 12V, continuous power 1000W and unload current less than 0.8A. Comes with a USB port, and the 12V to 110V inverters' max efficiency reaches 90%, works at (-10°C, 50°C), and stores at (-30°C, 70°C). Modified sine inverter is compatible with air conditioners, washing machines, ovens, and so on.



12V conversion 220 inverter



[Amazon : 12 V To 220 Volt Inverter](#)

12v to 220v, Pure Sine Wave Inverter, AC 12 V, 24 V, 48 V to DC110V 220 V Power Converter with Socket and LCD Display for RV, Truck, Boat, Camping and Home (5000W)

[Learn More](#)

[Best 12V to 220V Power Inverters for Cars, ...](#)

Power inverters convert DC power from a 12V battery source into usable AC power at 220V, making them essential for cars, RVs, and off-grid applications. This article reviews five top 12V to 220V power inverters ...

[Learn More](#)



[1500 Watt Modified Sine Wave Inverter, 12VDC to 220VAC](#)

Energy efficient 1500 watt modified sine wave inverter for 12V/24V DC to 200V/220V/230V/240V AC conversion, rated power 1500W, peak power 3000W. Supports 12V/24V, compatible with ...

[Learn More](#)



[Best 12V to 220V Power Inverters for Cars, Homes, and ...](#)

Power inverters convert DC power from a 12V battery source into usable AC power at 220V, making them essential for cars, RVs, and off-grid applications. This article reviews ...



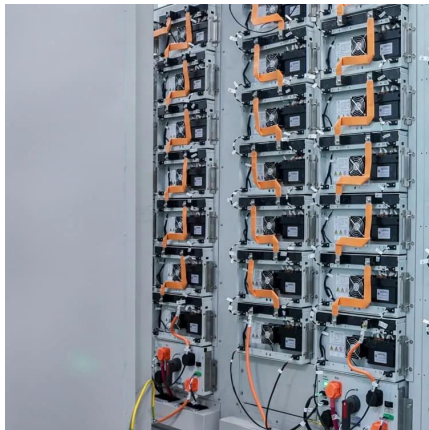
[Learn More](#)



Complete Guide to Building a DC to AC Inverter Circuit: 12V ...

A DC to AC inverter circuit transforms 12V DC input into 220V AC output, enabling you to power standard household devices from battery sources. This comprehensive guide will ...

[Learn More](#)



Best 12 Volt to 220 Volt Pure Sine Wave Inverters for Home ...

LiitoKala 1200W Pure Sine Wave Inverter 12V/24V to 220V Check Price on Amazon The LiitoKala 1200W Pure Sine Wave Inverter converts 12V or 24V DC power to a stable ...

[Learn More](#)



[1500 Watt Modified Sine Wave Inverter.](#)

Energy efficient 1500 watt modified sine wave inverter for 12V/24V DC to 200V/220V/230V/240V AC conversion, rated power 1500W, peak power 3000W. Supports 12V/24V, compatible with 9V-15V and 20V-31V voltage ...

[Learn More](#)





[Amazon : Power Converter 12 Volt To 220](#)

High-Power 4000W DC to AC Power Inverter - 12V to 110V/220V Converter with Dual USB Ports, Universal AC Outlet, LED Display for Cars, Trucks, RVs, and Home Backup

[Learn More](#)



[12V-220V/230V Battery Inverter , 3000 Watt Pure Sine Wave](#)

Leaptrend 3000/6000 Watt Power Inverter Pure Sine Wave DC 12V to 220/230 Volt AC Converter for RVs, Trucks, Heavy ...

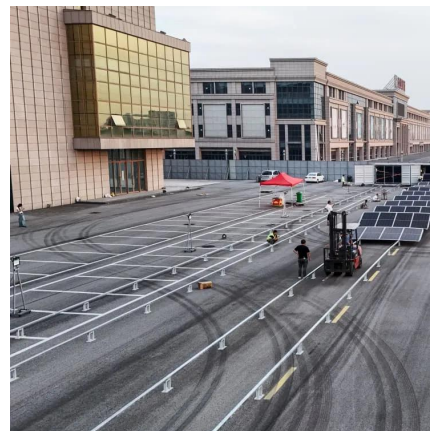
[Learn More](#)



[Complete Guide to Building a DC to AC ...](#)

A DC to AC inverter circuit transforms 12V DC input into 220V AC output, enabling you to power standard household devices from battery sources. This comprehensive guide will walk you through the theory, ...

[Learn More](#)



12v Inverter, 12v DC to 110v/220v AC Power Inverter , inverter...

12V power inverter with continuous power 2000 watt, 4000 watt peak power, and max efficiency 90%. The 2000w modified sine wave inverter can convert 12 Volt DC to 110/120 Volt or ...

[Learn More](#)



Best 12 Volt to 220 Volt Inverters for Reliable Power Conversion

Finding a dependable inverter to convert 12 volt DC power to 220 volt AC is essential for home, RV, solar, and automotive applications. This guide reviews the best 12 volt ...

[Learn More](#)



[12V-220V/230V Battery Inverter , 3000 Watt Pure Sine Wave](#)

Leaptrend 3000/6000 Watt Power Inverter Pure Sine Wave DC 12V to 220/230 Volt AC Converter for RVs, Trucks, Heavy Duties, Caravan, Coffee Vans, Camping Outdoor Off-Grid Solar ...

[Learn More](#)

[Best 12V to 220V Inverters for Reliable Power Conversion](#)

When you need to convert 12V DC power to 220V AC for home, vehicle, or off-grid use, quality inverters are essential for efficiency and device protection. Below is a summary ...

[Learn More](#)



Contact Us

For catalog requests, pricing, or partnerships, please visit:
<https://fundacjawandea-imk.pl>



Scan QR Code for More Information



<https://fundacja-wandea-imk.pl>