

10kw inverter DC side voltage range





Overview

What is the input voltage range for a 10kW inverter?

Input voltage ranges for 10kW inverters commonly center around 48V DC systems, though some models accommodate 24V or higher voltage configurations.

How much power does a 10kW inverter need?

Electric vehicle charging needs increasingly drive 10kW inverter adoption. Level 2 EV chargers typically require 7.2-11kW of power, making 10kW inverters essential for homeowners wanting to charge vehicles using solar energy or during power outages. Workshop and garage power requirements often exceed smaller inverter capabilities.

What is the efficiency rating of a 10kW inverter?

Efficiency ratings for modern 10kW inverters typically range from 92% to 97.6%. Higher efficiency means less energy lost as heat during the DC-to-AC conversion process, resulting in more usable power and reduced operating costs. Premium models with advanced power electronics and optimized designs achieve the highest efficiency ratings.

How much does a 10kW inverter cost?

The ExpertPower 10kW inverter at \$2,399 provides exceptional solar input capacity with 12kW PV handling capability. This 120% DC oversizing maximizes energy harvest during partial shading or low-light conditions, improving overall system performance. Parallel operation up to 60kW total capacity offers excellent scalability for growing energy needs.



10kw inverter DC side voltage range



10KW THREE PHASE HYBRID INVERTER

10KW THREE PHASE HYBRID INVERTER
FEATURES Max. efficiency 97.8% with ultra-low start-up voltage Support multiple inverters in parallel, maximum of 10 inverters V Fast ...

[Learn More](#)

Design considerations of a 10kW single-phase string ...

Figure 2 illustrates the 10kW, GaN-Based Single-Phase String Inverter with Battery Energy Storage System Reference Design, including all active and passive components.

[Learn More](#)



SolaX X3-PRO G2 Datasheet-En-V2

1 The maximum input voltage is the upper limit of the DC voltage. Any higher input DC voltage would probably damage the inverter 2 Input voltage exceeding the MPPT voltage ...

[Learn More](#)

INVT Solar XG 3-10kW Single-phase On-grid ...

XG3-10kW single-phase on-grid solar inverter is a string inverter developed by INVT Solar specifically for residential users, with small size, light weight, easy installation and maintenance,



and exce

[Learn More](#)



[Solar Inverters: 10kW Three Phase Hybrid ...](#)

Rated PV Input Voltage: 550V (160V~800V; Start-up Voltage: 160V; MPPT Voltage Range: 200-650V; Full Load DC Voltage Range: 350-650V ;

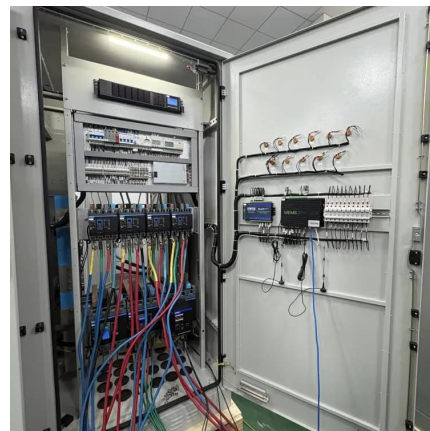
[Learn More](#)



[Datasheet-10kw-x1-genki](#)

PV Input Voltage [V] Start Output Voltage [V]
Nominal Input Voltage [V] Operating Voltage
Range [V] MPPT Voltage Range [V] No. of MPPT /
Strings per MPPT Max. Input ...

[Learn More](#)



[Solar Inverters: 10kW Three Phase Hybrid Solar Inverter](#)

Rated PV Input Voltage: 550V (160V~800V; Start-up Voltage: 160V; MPPT Voltage Range: 200-650V; Full Load DC Voltage Range: 350-650V ;

[Learn More](#)





X3 Genki 10kW Hybrid Inverter

X3 Genki 10kW Hybrid Inverter features 200% PV oversizing, smart load management, IP65 protection, and optional AFCI for reliable, flexible solar energy solutions.

[Learn More](#)



10kW Inverters: Complete Guide To Choosing & Installing ...

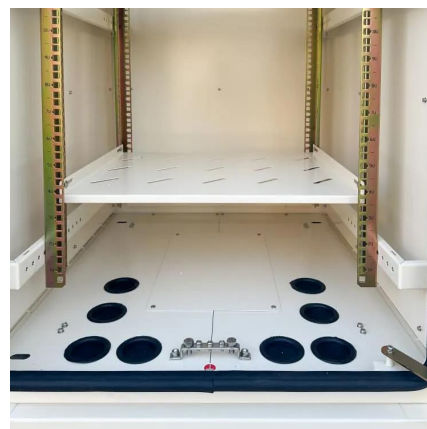
Input voltage ranges for 10kW inverters commonly center around 48V DC systems, though some models accommodate 24V or higher voltage configurations. The 48V ...

[Learn More](#)

INVT Solar XG 3-10kW Single-phase On-grid Solar Inverter

XG3-10kW single-phase on-grid solar inverter is a string inverter developed by INVT Solar specifically for residential users, with small size, light weight, easy installation and ...

[Learn More](#)



GTI 10kW

Operating Range 160V DC - 1000V DC Startup voltage 180V DC Input specifications DC INPUT (PV SIDE) Max. Allowable PV Power 12500 W Nominal PV voltage 630V DC Nominal DC ...

[Learn More](#)



REF-10KW3LNPC2

The 10 kW NPC2 inverter reference design follows a hot-side control structure where all the measurements and the gate-drive power supply offer functional isolation.

[Learn More](#)



Contact Us

For catalog requests, pricing, or partnerships, please visit:
<https://fundacjawandea-imk.pl>

Scan QR Code for More Information



<https://fundacjawandea-imk.pl>